

# PROPERTIES DEVELOPMENT

A DIVISION OF IBF, INC.



January 13, 2007

## AVAILABLE LOTS

<u>LOT NO.</u>		<u>PRICE</u>	<u>LOT NO.</u>	<u>PRICE</u>
1	-	\$116,700.00	<del>* 68</del>	<del>\$175,900.00</del>
18	-	\$126,900.00	70	- \$179,400.00
19	-	\$130,400.00	<del>* 73</del>	<del>\$189,600.00</del>
68	-	\$175,900.00	<del>* 77</del>	<del>\$189,800.00</del>
			78	- \$178,900.00

FINANCING AVAILABLE

NO ASSESSMENTS

\* SALE PENDING

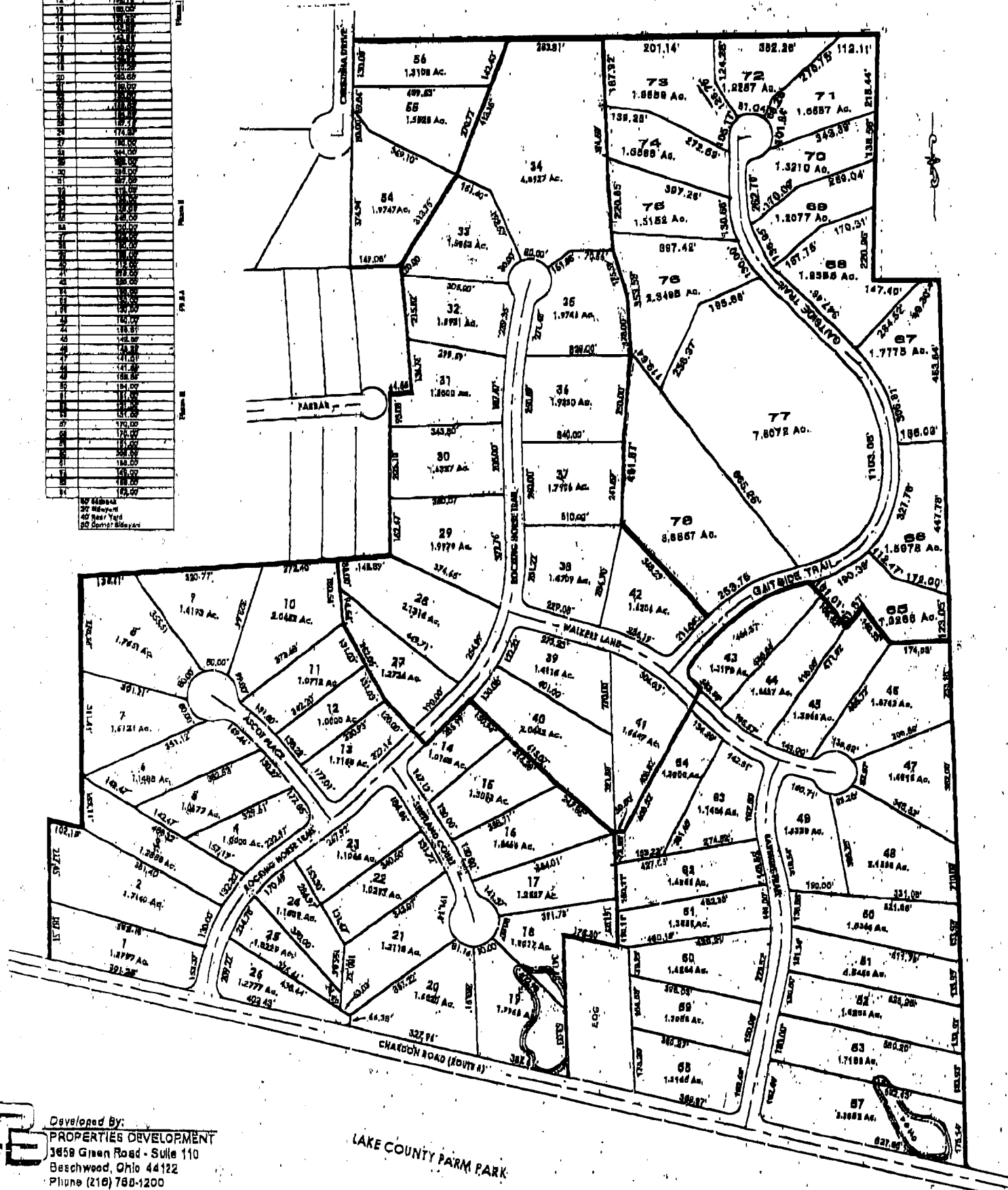
# Rocking Horse Farms

Kirtland, Ohio



LOT NO.	ACRES	AREA
1	1.710	117.00
2	1.710	117.00
3	1.710	117.00
4	1.710	117.00
5	1.710	117.00
6	1.710	117.00
7	1.710	117.00
8	1.710	117.00
9	1.710	117.00
10	1.710	117.00
11	1.710	117.00
12	1.710	117.00
13	1.710	117.00
14	1.710	117.00
15	1.710	117.00
16	1.710	117.00
17	1.710	117.00
18	1.710	117.00
19	1.710	117.00
20	1.710	117.00
21	1.710	117.00
22	1.710	117.00
23	1.710	117.00
24	1.710	117.00
25	1.710	117.00
26	1.710	117.00
27	1.710	117.00
28	1.710	117.00
29	1.710	117.00
30	1.710	117.00
31	1.710	117.00
32	1.710	117.00
33	1.710	117.00
34	1.710	117.00
35	1.710	117.00
36	1.710	117.00
37	1.710	117.00
38	1.710	117.00
39	1.710	117.00
40	1.710	117.00
41	1.710	117.00
42	1.710	117.00
43	1.710	117.00
44	1.710	117.00
45	1.710	117.00
46	1.710	117.00
47	1.710	117.00
48	1.710	117.00
49	1.710	117.00
50	1.710	117.00
51	1.710	117.00
52	1.710	117.00
53	1.710	117.00
54	1.710	117.00
55	1.710	117.00
56	1.710	117.00
57	1.710	117.00
58	1.710	117.00
59	1.710	117.00
60	1.710	117.00
61	1.710	117.00
62	1.710	117.00
63	1.710	117.00
64	1.710	117.00
65	1.710	117.00
66	1.710	117.00
67	1.710	117.00
68	1.710	117.00
69	1.710	117.00
70	1.710	117.00
71	1.710	117.00
72	1.710	117.00
73	1.710	117.00
74	1.710	117.00
75	1.710	117.00
76	1.710	117.00
77	1.710	117.00
78	1.710	117.00
79	1.710	117.00
80	1.710	117.00
81	1.710	117.00
82	1.710	117.00
83	1.710	117.00
84	1.710	117.00
85	1.710	117.00
86	1.710	117.00
87	1.710	117.00
88	1.710	117.00
89	1.710	117.00
90	1.710	117.00
91	1.710	117.00
92	1.710	117.00
93	1.710	117.00
94	1.710	117.00
95	1.710	117.00
96	1.710	117.00
97	1.710	117.00
98	1.710	117.00
99	1.710	117.00
100	1.710	117.00

LOT NO.	ACRES	AREA
1	1.710	117.00
2	1.710	117.00
3	1.710	117.00
4	1.710	117.00
5	1.710	117.00
6	1.710	117.00
7	1.710	117.00
8	1.710	117.00
9	1.710	117.00
10	1.710	117.00
11	1.710	117.00
12	1.710	117.00
13	1.710	117.00
14	1.710	117.00
15	1.710	117.00
16	1.710	117.00
17	1.710	117.00
18	1.710	117.00
19	1.710	117.00
20	1.710	117.00
21	1.710	117.00
22	1.710	117.00
23	1.710	117.00
24	1.710	117.00
25	1.710	117.00
26	1.710	117.00
27	1.710	117.00
28	1.710	117.00
29	1.710	117.00
30	1.710	117.00
31	1.710	117.00
32	1.710	117.00
33	1.710	117.00
34	1.710	117.00
35	1.710	117.00
36	1.710	117.00
37	1.710	117.00
38	1.710	117.00
39	1.710	117.00
40	1.710	117.00
41	1.710	117.00
42	1.710	117.00
43	1.710	117.00
44	1.710	117.00
45	1.710	117.00
46	1.710	117.00
47	1.710	117.00
48	1.710	117.00
49	1.710	117.00
50	1.710	117.00
51	1.710	117.00
52	1.710	117.00
53	1.710	117.00
54	1.710	117.00
55	1.710	117.00
56	1.710	117.00
57	1.710	117.00
58	1.710	117.00
59	1.710	117.00
60	1.710	117.00
61	1.710	117.00
62	1.710	117.00
63	1.710	117.00
64	1.710	117.00
65	1.710	117.00
66	1.710	117.00
67	1.710	117.00
68	1.710	117.00
69	1.710	117.00
70	1.710	117.00
71	1.710	117.00
72	1.710	117.00
73	1.710	117.00
74	1.710	117.00
75	1.710	117.00
76	1.710	117.00
77	1.710	117.00
78	1.710	117.00
79	1.710	117.00
80	1.710	117.00
81	1.710	117.00
82	1.710	117.00
83	1.710	117.00
84	1.710	117.00
85	1.710	117.00
86	1.710	117.00
87	1.710	117.00
88	1.710	117.00
89	1.710	117.00
90	1.710	117.00
91	1.710	117.00
92	1.710	117.00
93	1.710	117.00
94	1.710	117.00
95	1.710	117.00
96	1.710	117.00
97	1.710	117.00
98	1.710	117.00
99	1.710	117.00
100	1.710	117.00



Developed By:  
**PROPERTIES DEVELOPMENT**  
 3659 Green Road - Suite 110  
 Beschwood, Ohio 44122  
 Phone (216) 766-1200  
 Fax (216) 766-1201

LAKE COUNTY PARK PARK