

MORTGAGE RELEASE:

Be it known that SKY BANK Mortgagee of the land indicated on the annexed plat does hereby join in the above dedication and release from the operation and effect of the mortgage of the land hereinabove described, the mortgage of number 2004-02-2855 of the Lake County Record of Mortgages, Stone Ridge Drive (50 feet wide) and Sugarhouse Hill Court (50 feet wide) and the easements herein granted and reserved.

In witness whereof SKY BANK has caused instrument to be subscribed in its name by David J. Walden thereunto duly authorized and the seal hereunto affixed at Dayton, Ohio this 1st day of March, 2005.

SIGNED AND ACKNOWLEDGED IN THE PRESENCE OF:

Richard A. Riniwie Witness
Name Printed Richard A. Riniwie

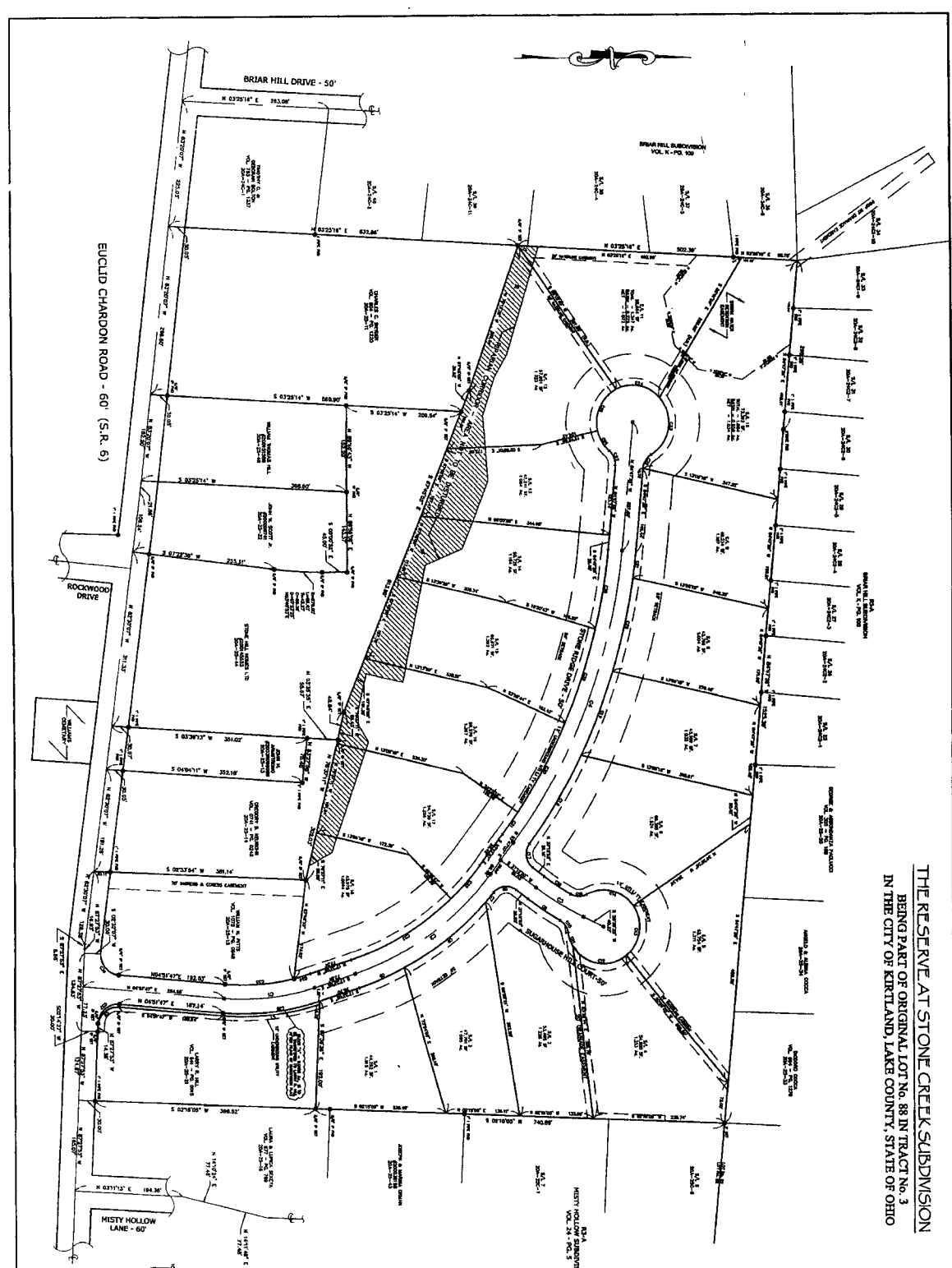
Michael L. Savage Witness
Name Printed Michael L. Savage

Marklyn L. Savage Name Printed
STATE OF OHIO, COUNTY OF Lorain
Before me a Notary Public in and said for said County and State, personally appeared the above named SKY BANK through James T. Westerman its Legal Representative, who represented that he is duly authorized in the premises, who acknowledged that he did sign the foregoing instrument and that he is the same person as the Notary whose name and official seal are on my name and official seal at Dayton, Ohio this 1st day of March, 2005.



101.50-31-2

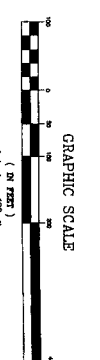
THE RESERVE AT STONE CREEK SUBDIVISION
 BEING PART OF ORIGINAL LOT No. 88 IN TRACT No. 3
 IN THE CITY OF KIRTLAND, LAKE COUNTY, STATE OF OHIO



OWNER	ADDRESS	PHONE	DATE	REMARKS
C1	101.50-31-2	101.50-31-2	10/1/00	101.50-31-2
C2	101.50-31-2	101.50-31-2	10/1/00	101.50-31-2
C3	101.50-31-2	101.50-31-2	10/1/00	101.50-31-2
C4	101.50-31-2	101.50-31-2	10/1/00	101.50-31-2

OWNER	ADDRESS	PHONE	DATE	REMARKS
C1	101.50-31-2	101.50-31-2	10/1/00	101.50-31-2
C2	101.50-31-2	101.50-31-2	10/1/00	101.50-31-2
C3	101.50-31-2	101.50-31-2	10/1/00	101.50-31-2
C4	101.50-31-2	101.50-31-2	10/1/00	101.50-31-2
C5	101.50-31-2	101.50-31-2	10/1/00	101.50-31-2
C6	101.50-31-2	101.50-31-2	10/1/00	101.50-31-2
C7	101.50-31-2	101.50-31-2	10/1/00	101.50-31-2
C8	101.50-31-2	101.50-31-2	10/1/00	101.50-31-2
C9	101.50-31-2	101.50-31-2	10/1/00	101.50-31-2
C10	101.50-31-2	101.50-31-2	10/1/00	101.50-31-2
C11	101.50-31-2	101.50-31-2	10/1/00	101.50-31-2
C12	101.50-31-2	101.50-31-2	10/1/00	101.50-31-2
C13	101.50-31-2	101.50-31-2	10/1/00	101.50-31-2
C14	101.50-31-2	101.50-31-2	10/1/00	101.50-31-2
C15	101.50-31-2	101.50-31-2	10/1/00	101.50-31-2
C16	101.50-31-2	101.50-31-2	10/1/00	101.50-31-2
C17	101.50-31-2	101.50-31-2	10/1/00	101.50-31-2
C18	101.50-31-2	101.50-31-2	10/1/00	101.50-31-2
C19	101.50-31-2	101.50-31-2	10/1/00	101.50-31-2
C20	101.50-31-2	101.50-31-2	10/1/00	101.50-31-2
C21	101.50-31-2	101.50-31-2	10/1/00	101.50-31-2
C22	101.50-31-2	101.50-31-2	10/1/00	101.50-31-2
C23	101.50-31-2	101.50-31-2	10/1/00	101.50-31-2
C24	101.50-31-2	101.50-31-2	10/1/00	101.50-31-2
C25	101.50-31-2	101.50-31-2	10/1/00	101.50-31-2
C26	101.50-31-2	101.50-31-2	10/1/00	101.50-31-2
C27	101.50-31-2	101.50-31-2	10/1/00	101.50-31-2
C28	101.50-31-2	101.50-31-2	10/1/00	101.50-31-2
C29	101.50-31-2	101.50-31-2	10/1/00	101.50-31-2
C30	101.50-31-2	101.50-31-2	10/1/00	101.50-31-2
C31	101.50-31-2	101.50-31-2	10/1/00	101.50-31-2
C32	101.50-31-2	101.50-31-2	10/1/00	101.50-31-2
C33	101.50-31-2	101.50-31-2	10/1/00	101.50-31-2
C34	101.50-31-2	101.50-31-2	10/1/00	101.50-31-2
C35	101.50-31-2	101.50-31-2	10/1/00	101.50-31-2
C36	101.50-31-2	101.50-31-2	10/1/00	101.50-31-2
C37	101.50-31-2	101.50-31-2	10/1/00	101.50-31-2
C38	101.50-31-2	101.50-31-2	10/1/00	101.50-31-2
C39	101.50-31-2	101.50-31-2	10/1/00	101.50-31-2
C40	101.50-31-2	101.50-31-2	10/1/00	101.50-31-2
C41	101.50-31-2	101.50-31-2	10/1/00	101.50-31-2
C42	101.50-31-2	101.50-31-2	10/1/00	101.50-31-2
C43	101.50-31-2	101.50-31-2	10/1/00	101.50-31-2
C44	101.50-31-2	101.50-31-2	10/1/00	101.50-31-2
C45	101.50-31-2	101.50-31-2	10/1/00	101.50-31-2
C46	101.50-31-2	101.50-31-2	10/1/00	101.50-31-2
C47	101.50-31-2	101.50-31-2	10/1/00	101.50-31-2
C48	101.50-31-2	101.50-31-2	10/1/00	101.50-31-2
C49	101.50-31-2	101.50-31-2	10/1/00	101.50-31-2
C50	101.50-31-2	101.50-31-2	10/1/00	101.50-31-2
C51	101.50-31-2	101.50-31-2	10/1/00	101.50-31-2
C52	101.50-31-2	101.50-31-2	10/1/00	101.50-31-2
C53	101.50-31-2	101.50-31-2	10/1/00	101.50-31-2
C54	101.50-31-2	101.50-31-2	10/1/00	101.50-31-2
C55	101.50-31-2	101.50-31-2	10/1/00	101.50-31-2
C56	101.50-31-2	101.50-31-2	10/1/00	101.50-31-2
C57	101.50-31-2	101.50-31-2	10/1/00	101.50-31-2
C58	101.50-31-2	101.50-31-2	10/1/00	101.50-31-2
C59	101.50-31-2	101.50-31-2	10/1/00	101.50-31-2
C60	101.50-31-2	101.50-31-2	10/1/00	101.50-31-2
C61	101.50-31-2	101.50-31-2	10/1/00	101.50-31-2
C62	101.50-31-2	101.50-31-2	10/1/00	101.50-31-2
C63	101.50-31-2	101.50-31-2	10/1/00	101.50-31-2
C64	101.50-31-2	101.50-31-2	10/1/00	101.50-31-2
C65	101.50-31-2	101.50-31-2	10/1/00	101.50-31-2
C66	101.50-31-2	101.50-31-2	10/1/00	101.50-31-2
C67	101.50-31-2	101.50-31-2	10/1/00	101.50-31-2
C68	101.50-31-2	101.50-31-2	10/1/00	101.50-31-2
C69	101.50-31-2	101.50-31-2	10/1/00	101.50-31-2
C70	101.50-31-2	101.50-31-2	10/1/00	101.50-31-2
C71	101.50-31-2	101.50-31-2	10/1/00	101.50-31-2
C72	101.50-31-2	101.50-31-2	10/1/00	101.50-31-2
C73	101.50-31-2	101.50-31-2	10/1/00	101.50-31-2
C74	101.50-31-2	101.50-31-2	10/1/00	101.50-31-2
C75	101.50-31-2	101.50-31-2	10/1/00	101.50-31-2
C76	101.50-31-2	101.50-31-2	10/1/00	101.50-31-2
C77	101.50-31-2	101.50-31-2	10/1/00	101.50-31-2
C78	101.50-31-2	101.50-31-2	10/1/00	101.50-31-2
C79	101.50-31-2	101.50-31-2	10/1/00	101.50-31-2
C80	101.50-31-2	101.50-31-2	10/1/00	101.50-31-2
C81	101.50-31-2	101.50-31-2	10/1/00	101.50-31-2
C82	101.50-31-2	101.50-31-2	10/1/00	101.50-31-2
C83	101.50-31-2	101.50-31-2	10/1/00	101.50-31-2
C84	101.50-31-2	101.50-31-2	10/1/00	101.50-31-2
C85	101.50-31-2	101.50-31-2	10/1/00	101.50-31-2
C86	101.50-31-2	101.50-31-2	10/1/00	101.50-31-2
C87	101.50-31-2	101.50-31-2	10/1/00	101.50-31-2
C88	101.50-31-2	101.50-31-2	10/1/00	101.50-31-2
C89	101.50-31-2	101.50-31-2	10/1/00	101.50-31-2
C90	101.50-31-2	101.50-31-2	10/1/00	101.50-31-2
C91	101.50-31-2	101.50-31-2	10/1/00	101.50-31-2
C92	101.50-31-2	101.50-31-2	10/1/00	101.50-31-2
C93	101.50-31-2	101.50-31-2	10/1/00	101.50-31-2
C94	101.50-31-2	101.50-31-2	10/1/00	101.50-31-2
C95	101.50-31-2	101.50-31-2	10/1/00	101.50-31-2
C96	101.50-31-2	101.50-31-2	10/1/00	101.50-31-2
C97	101.50-31-2	101.50-31-2	10/1/00	101.50-31-2
C98	101.50-31-2	101.50-31-2	10/1/00	101.50-31-2
C99	101.50-31-2	101.50-31-2	10/1/00	101.50-31-2
C100	101.50-31-2	101.50-31-2	10/1/00	101.50-31-2

BARCOCK, JONES & ASSOCIATES, INC.
 CIVIL ENGINEERS-SURVEYORS-AND PLANNERS
 101.50-31-2
 (419) 521-1811



BEARINGS ARE BASED UPON THE CENTRELINE OF EUCLID CHARDON ROAD BEING NORTH 87°27'53" WEST AND ARE USED TO DISCLOSE ANGLES ONLY.