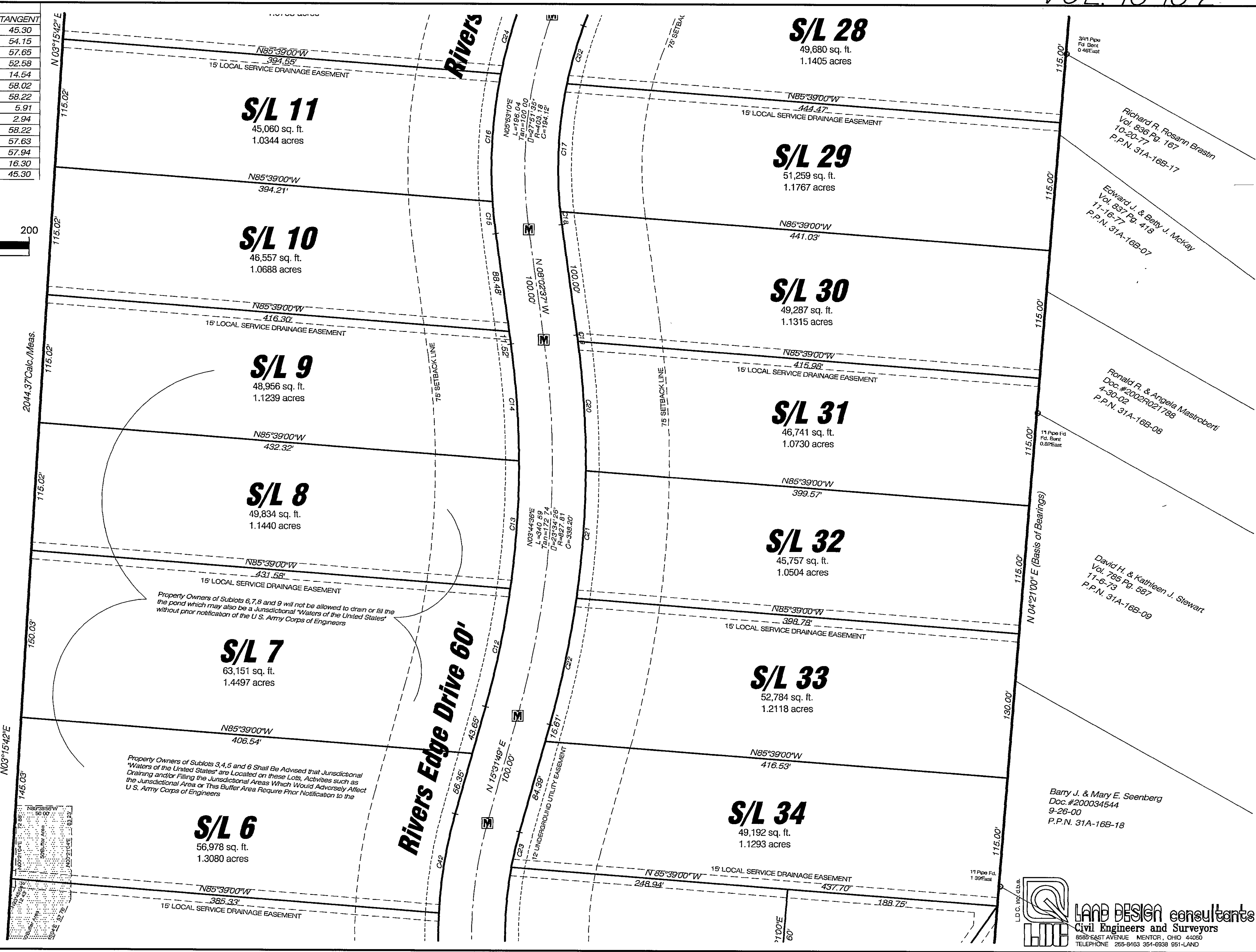
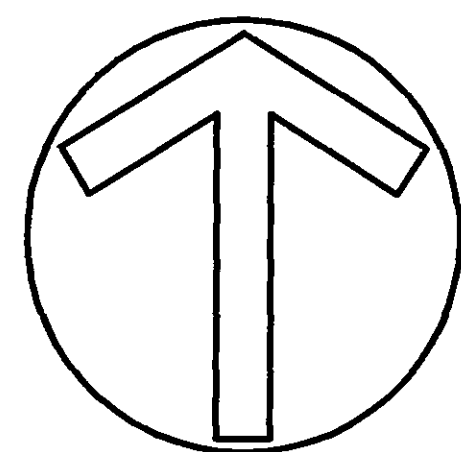
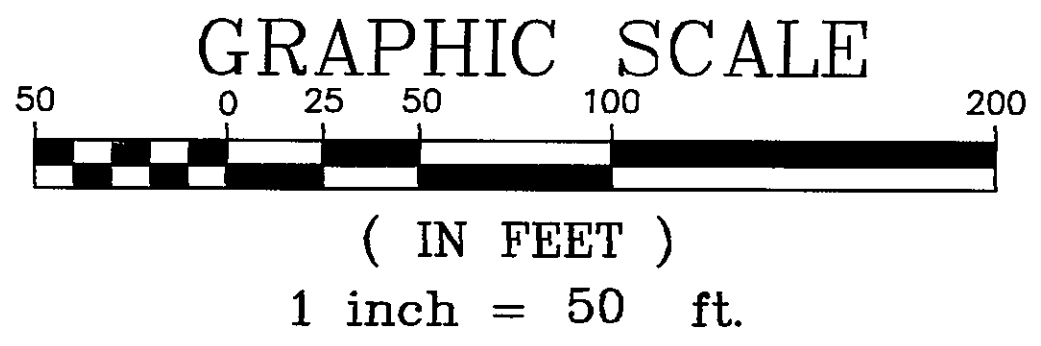


CURVE TABLE				CHORD		
CURVE	LENGTH	RADIUS	DELTA	CHORD	BRG	TANGENT
C11	90.22	405.00	12°45'51"	90.04	N09°08'54"E	45.30
C12	108.13	797.81	07°45'57"	108.05	N11°38'50"E	54.15
C13	115.11	797.81	08°16'00"	115.01	N03°37'52"E	57.65
C14	105.01	797.81	07°32'29"	104.93	N04°16'23"W	52.58
C15	29.07	433.18	03°50'43"	29.07	N06°07'15"W	14.54
C16	115.36	433.18	15°15'29"	115.01	N03°25'51"E	58.02
C17	115.51	373.18	17°44'06"	115.05	N02°38'18"E	58.22
C18	11.82	373.18	01°48'52"	11.82	N07°08'11"W	5.91
C19	5.88	857.81	00°23'34"	5.88	N07°50'50"W	2.94
C20	116.25	857.81	07°45'54"	116.16	N03°46'06"W	58.22
C21	115.09	857.81	07°41'14"	115.00	N03°57'28"E	57.63
C22	115.71	857.81	07°43'44"	115.63	N11°39'57"E	57.94
C23	32.58	345.00	05°24'39"	32.57	N12°49'29"E	16.30
C24	90.22	405.00	12°45'50"	90.04	S09°08'54"W	45.30



Richard R. Rosann Brasin
Vol. 836 Pg. 167
10-20-77
P.P.N. 31A-16B-17

Edward J. & Betty J. McKay
Vol. 897 Pg. 418
11-16-77
P.P.N. 31A-16B-07

Ronald R. & Angela Mastroberti
Doc. #2002R021785
4-30-02
P.P.N. 31A-16B-08

David H. & Kathleen J. Stewart
Vol. 785 Pg. 587
11-6-73
P.P.N. 31A-16B-09

Barry J. & Mary E. Seenberg
Doc. #200034544
9-26-00
P.P.N. 31A-16B-18