



# The Nature Preserve South

Part of Lot No. 1, Tract No. 1, and Lot No. 1, Tract No. 2 Concord Township  
Township 10 North, Range 8 West of the Connecticut Western Reserve  
Now Situated in the Township of Concord, County of Lake & State of Ohio  
FEBRUARY 2005  
SCALE : 1"=50'

### MORTGAGE RELEASE

BE IT KNOWN THAT THE HOME SAVINGS AND LOAN COMPANY OF OHIO HAS RECEIVED FROM THE ABOVE DEBTOR AND HAS PAID TO THE DEBTOR THE FULL AMOUNT OF THE MORTGAGE DEBT BY WHICH SAID DEBTOR IS OBLIGATED TO SAID COMPANY AND THE DEBTOR HAS RECEIVED FROM SAID COMPANY A RECEIPT THEREFOR AND THE DEBTOR HAS AGREED TO SIGN AND TO CAUSE TO BE SIGNED THIS INSTRUMENT TO BE RECORDED IN THE PUBLIC RECORDS OF THE COUNTY OF LAKE AND STATE OF OHIO.

SIGNED AND ACKNOWLEDGED IN THE PRESENCE OF:

*Robert A. Glick* DEBTOR  
*Robert A. Glick* WITNESS  
*Robert A. Glick* WITNESS

STATE OF OHIO )  
COUNTY OF )  
I, THE HOME SAVINGS AND LOAN COMPANY OF OHIO, DO HEREBY RELEASE AND DISCHARGE THE ABOVE DEBTOR FROM THE MORTGAGE DEBT BY WHICH SAID DEBTOR IS OBLIGATED TO SAID COMPANY AND THE DEBTOR HAS RECEIVED FROM SAID COMPANY A RECEIPT THEREFOR AND THE DEBTOR HAS AGREED TO SIGN AND TO CAUSE TO BE SIGNED THIS INSTRUMENT TO BE RECORDED IN THE PUBLIC RECORDS OF THE COUNTY OF LAKE AND STATE OF OHIO.

### MORTGAGE RELEASE

BE IT KNOWN THAT THE HOME SAVINGS AND LOAN COMPANY OF OHIO HAS RECEIVED FROM THE ABOVE DEBTOR AND HAS PAID TO THE DEBTOR THE FULL AMOUNT OF THE MORTGAGE DEBT BY WHICH SAID DEBTOR IS OBLIGATED TO SAID COMPANY AND THE DEBTOR HAS RECEIVED FROM SAID COMPANY A RECEIPT THEREFOR AND THE DEBTOR HAS AGREED TO SIGN AND TO CAUSE TO BE SIGNED THIS INSTRUMENT TO BE RECORDED IN THE PUBLIC RECORDS OF THE COUNTY OF LAKE AND STATE OF OHIO.

*Robert A. Glick* DEBTOR  
*Robert A. Glick* WITNESS  
*Robert A. Glick* WITNESS

STATE OF OHIO )  
COUNTY OF )  
I, THE HOME SAVINGS AND LOAN COMPANY OF OHIO, DO HEREBY RELEASE AND DISCHARGE THE ABOVE DEBTOR FROM THE MORTGAGE DEBT BY WHICH SAID DEBTOR IS OBLIGATED TO SAID COMPANY AND THE DEBTOR HAS RECEIVED FROM SAID COMPANY A RECEIPT THEREFOR AND THE DEBTOR HAS AGREED TO SIGN AND TO CAUSE TO BE SIGNED THIS INSTRUMENT TO BE RECORDED IN THE PUBLIC RECORDS OF THE COUNTY OF LAKE AND STATE OF OHIO.



### APPROVALS

APPROVED THIS 23<sup>RD</sup> DAY OF JUNE 2005 BY THE LAKE COUNTY BOARD OF COMMISSIONERS  
*Robert A. Glick* ROBERT A. GICK  
*James R. Glick* JAMES R. GLICK  
*James R. Glick* JAMES R. GLICK

APPROVED THIS 16<sup>TH</sup> DAY OF JULY 2005 BY THE LAKE COUNTY PROSECUTOR  
*Charles E. Coulson* CHARLES E. COULSON

APPROVED THIS 16<sup>TH</sup> DAY OF NOV 2005 BY THE LAKE COUNTY SANITARY ENGINEER  
*Albert J. Swan* ALBERT J. SWAN, P.E.

APPROVED THIS 8<sup>TH</sup> DAY OF SEPT 2005 BY THE LAKE COUNTY PLANNING COMMISSION  
*Darrell C. Webster* DARRELL C. WEBSTER, DIRECTOR

APPROVED THIS 21<sup>ST</sup> DAY OF MARCH 2005 BY THE CONCORD TOWNSHIP TRUSTEES  
*Diana J. Frankland* DIANA J. FRANKLAND

*Caroline J. Schick* CAROLINE J. SCHICK  
*Bob Patterson* BOB PATTERSON

### APPROVALS

UNDERGROUND UTILITY EASEMENT APPROVED AND ACCEPTED THIS 21<sup>ST</sup> DAY OF FEB 2005 BY OWELL NATURAL GAS CO.  
*Angela*  
*Kevin H. Hargood* KEVIN H. HARGOOD

UNDERGROUND UTILITY EASEMENT APPROVED AND ACCEPTED THIS 21<sup>ST</sup> DAY OF FEB 2005 BY ACEPNA CABLE OF LAKE COUNTY.  
*Cliff*  
*Winston Taylor* WINSTON TAYLOR

UNDERGROUND UTILITY EASEMENT APPROVED AND ACCEPTED THIS 23<sup>RD</sup> DAY OF FEB 2005 BY 800.  
*Robert A. Glick*  
*Robert A. Glick*

**TRANSFERRED**  
June 24, 2005  
Edward H. Zupardo  
Address: Lake County, Ohio

**LAND DESIGN CONSULTANTS**  
ENGINEERS - PLANNERS - SERVICES  
www.landdesign.com  
2501 East Market Street, Suite 15, Dayton, Ohio 45424  
Tel: (937) 233-8888 Fax: (937) 233-8889  
2501 East Market Street, Suite 15, Dayton, Ohio 45424  
Tel: (937) 233-8888 Fax: (937) 233-8889

GRAPHIC SCALE (IN FEET)

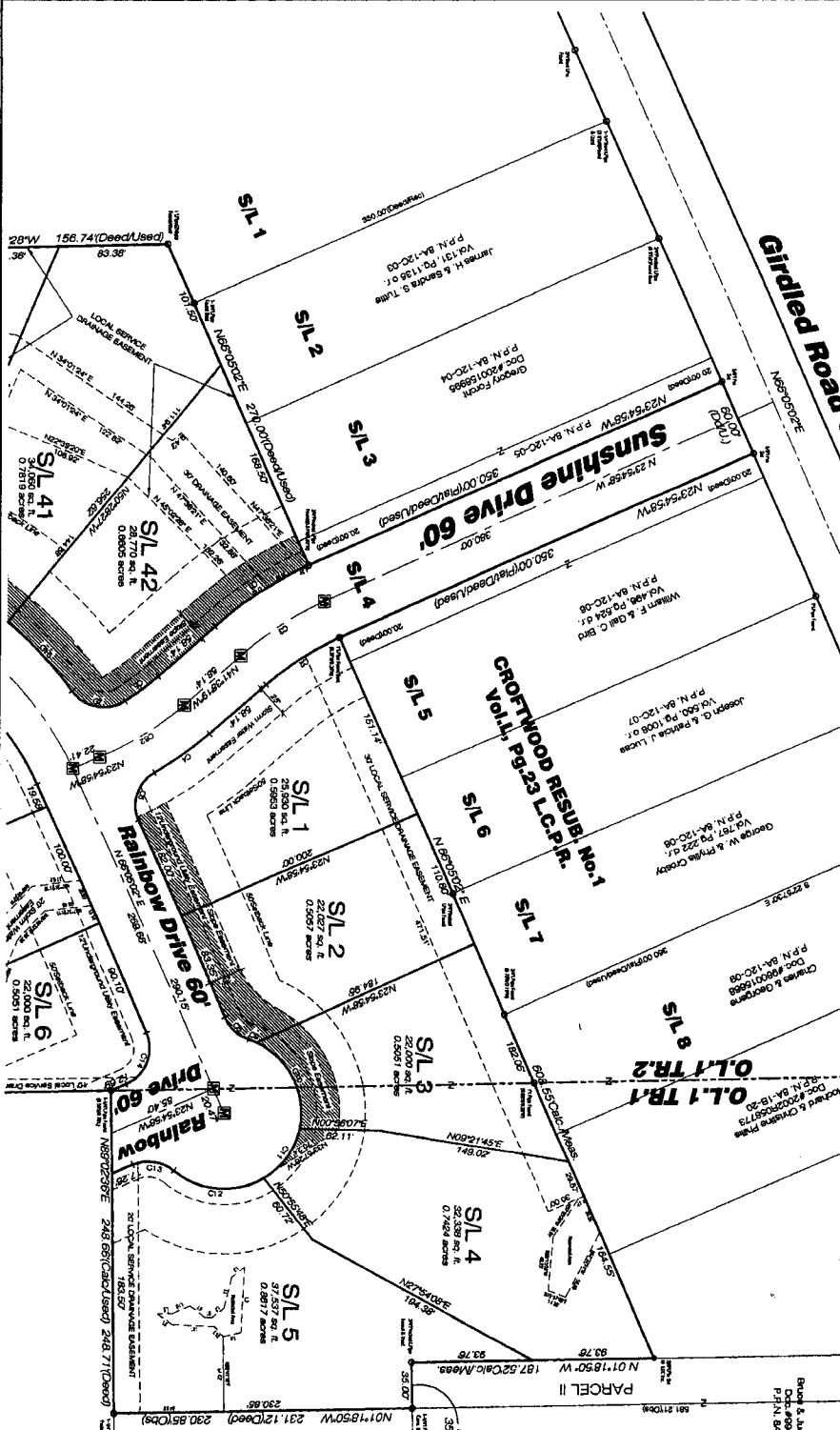
1 inch = 50 feet

0 50 100 150 200

LEGEND

- 5/8" x 3/8" Iron Pin Set (With Yellow Plastic Cap "L" Check)
- Yellow Corner Indicator
- Mass = Measured
- Pin = Stationed Pin
- D.M. = Dined & Measured
- Dot = Dined
- Pin = Measured
- Act. = Actual

CHAIN	LENGTH	BEARING	CHORD	TRANSIT
C1	60.01	280.00	174.9271	60.00
C2	60.05	230.00	174.9271	60.00
C3	77.33	280.00	174.9271	60.00
C4	62.27	280.00	174.9271	60.00
C5	91.73	280.00	174.9271	60.00
C6	45.28	30.00	481.1287	30.00
C7	7.17	60.00	76.3000	60.00
C8	60.17	60.00	76.3000	60.00
C9	50.00	60.00	76.3000	60.00
C10	35.28	60.00	76.3000	60.00
C11	72.87	280.00	174.9271	60.00
C12	77.33	280.00	174.9271	60.00



LINE TABLE

LINE	LENGTH	BEARING
L1	42.80	N87°29'57" W
L2	14.20	N87°29'57" W
L3	1.20	N87°29'57" W
L4	1.20	N87°29'57" W
L5	1.20	N87°29'57" W
L6	1.20	N87°29'57" W
L7	1.20	N87°29'57" W
L8	1.20	N87°29'57" W
L9	1.20	N87°29'57" W
L10	1.20	N87°29'57" W
L11	1.20	N87°29'57" W
L12	1.20	N87°29'57" W
L13	1.20	N87°29'57" W
L14	1.20	N87°29'57" W
L15	1.20	N87°29'57" W
L16	1.20	N87°29'57" W
L17	1.20	N87°29'57" W
L18	1.20	N87°29'57" W
L19	1.20	N87°29'57" W
L20	1.20	N87°29'57" W
L21	1.20	N87°29'57" W
L22	1.20	N87°29'57" W
L23	1.20	N87°29'57" W
L24	1.20	N87°29'57" W
L25	1.20	N87°29'57" W
L26	1.20	N87°29'57" W
L27	1.20	N87°29'57" W
L28	1.20	N87°29'57" W
L29	1.20	N87°29'57" W
L30	1.20	N87°29'57" W
L31	1.20	N87°29'57" W
L32	1.20	N87°29'57" W
L33	1.20	N87°29'57" W
L34	1.20	N87°29'57" W
L35	1.20	N87°29'57" W
L36	1.20	N87°29'57" W
L37	1.20	N87°29'57" W
L38	1.20	N87°29'57" W
L39	1.20	N87°29'57" W
L40	1.20	N87°29'57" W
L41	1.20	N87°29'57" W
L42	1.20	N87°29'57" W
L43	1.20	N87°29'57" W
L44	1.20	N87°29'57" W
L45	1.20	N87°29'57" W
L46	1.20	N87°29'57" W
L47	1.20	N87°29'57" W
L48	1.20	N87°29'57" W
L49	1.20	N87°29'57" W
L50	1.20	N87°29'57" W
L51	1.20	N87°29'57" W
L52	1.20	N87°29'57" W
L53	1.20	N87°29'57" W
L54	1.20	N87°29'57" W
L55	1.20	N87°29'57" W
L56	1.20	N87°29'57" W
L57	1.20	N87°29'57" W
L58	1.20	N87°29'57" W
L59	1.20	N87°29'57" W
L60	1.20	N87°29'57" W
L61	1.20	N87°29'57" W
L62	1.20	N87°29'57" W
L63	1.20	N87°29'57" W
L64	1.20	N87°29'57" W
L65	1.20	N87°29'57" W
L66	1.20	N87°29'57" W
L67	1.20	N87°29'57" W
L68	1.20	N87°29'57" W
L69	1.20	N87°29'57" W
L70	1.20	N87°29'57" W
L71	1.20	N87°29'57" W
L72	1.20	N87°29'57" W
L73	1.20	N87°29'57" W
L74	1.20	N87°29'57" W
L75	1.20	N87°29'57" W
L76	1.20	N87°29'57" W
L77	1.20	N87°29'57" W
L78	1.20	N87°29'57" W
L79	1.20	N87°29'57" W
L80	1.20	N87°29'57" W
L81	1.20	N87°29'57" W
L82	1.20	N87°29'57" W
L83	1.20	N87°29'57" W
L84	1.20	N87°29'57" W
L85	1.20	N87°29'57" W
L86	1.20	N87°29'57" W
L87	1.20	N87°29'57" W
L88	1.20	N87°29'57" W
L89	1.20	N87°29'57" W
L90	1.20	N87°29'57" W
L91	1.20	N87°29'57" W
L92	1.20	N87°29'57" W
L93	1.20	N87°29'57" W
L94	1.20	N87°29'57" W
L95	1.20	N87°29'57" W
L96	1.20	N87°29'57" W
L97	1.20	N87°29'57" W
L98	1.20	N87°29'57" W
L99	1.20	N87°29'57" W
L100	1.20	N87°29'57" W

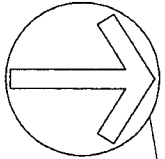
**LAND DESIGN CONSULTANTS**  
 Civil Engineers and Surveyors  
 1100 West 10th Street, Suite 100  
 Oklahoma City, Oklahoma 73106  
 Phone: (405) 525-1100  
 Fax: (405) 525-1101  
 Website: www.landdesign.com

101-49-24-2

William F. & Patricia M.  
Volsteads, P.O. Box 14  
P.O. Box 14-18-0

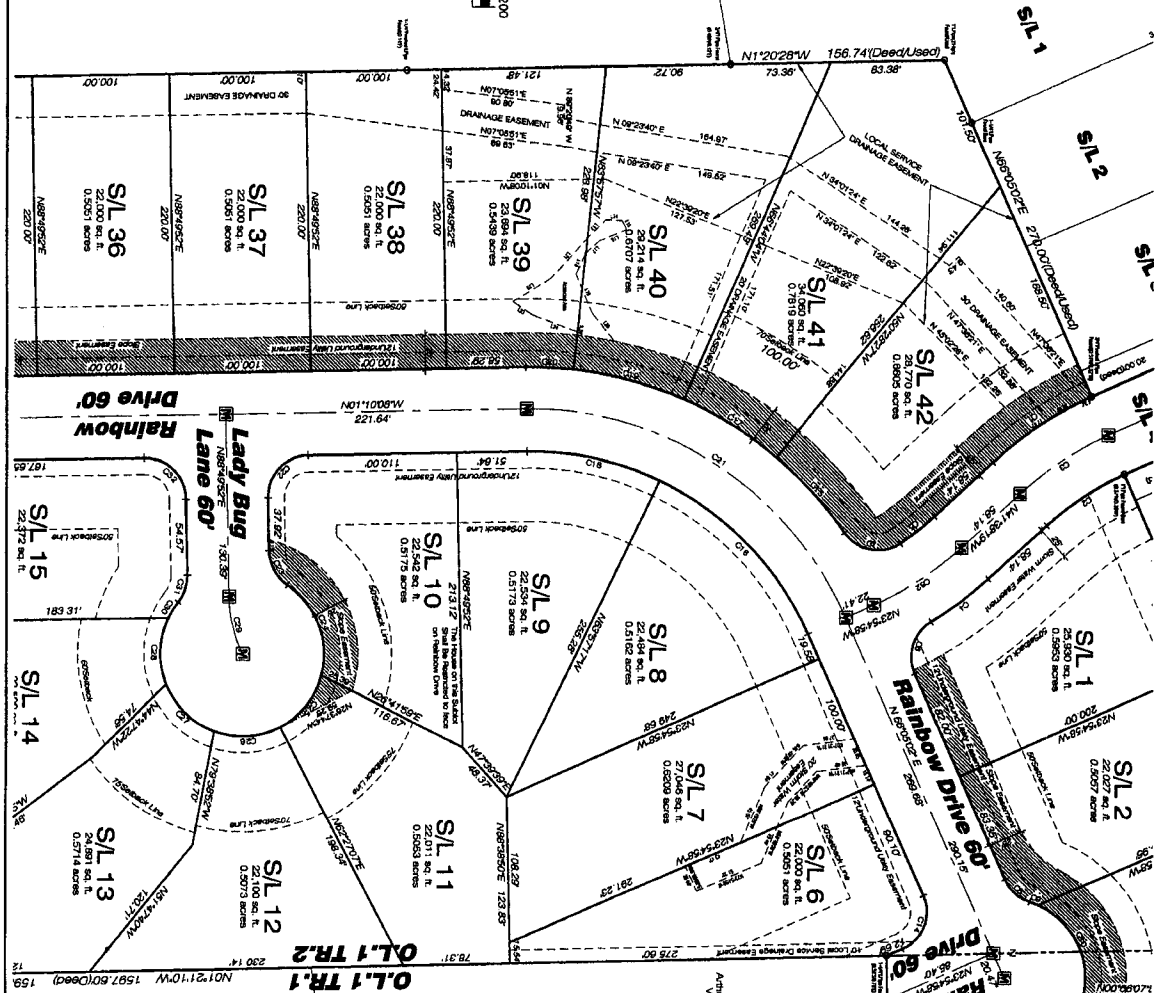
LINE TABLE

LINE	LENGTH	BEARING
L1	8.87	N89°50'00"W
L2	13.00	N89°50'00"W
L3	7.84	N89°50'00"W
L4	13.98	N89°50'00"W
L5	13.98	N89°50'00"W
L6	13.98	N89°50'00"W
L7	13.98	N89°50'00"W
L8	13.98	N89°50'00"W
L9	13.98	N89°50'00"W
L10	13.98	N89°50'00"W
L11	13.98	N89°50'00"W
L12	13.98	N89°50'00"W
L13	13.98	N89°50'00"W
L14	13.98	N89°50'00"W
L15	13.98	N89°50'00"W
L16	13.98	N89°50'00"W
L17	13.98	N89°50'00"W
L18	13.98	N89°50'00"W
L19	13.98	N89°50'00"W
L20	13.98	N89°50'00"W
L21	13.98	N89°50'00"W
L22	13.98	N89°50'00"W
L23	13.98	N89°50'00"W
L24	13.98	N89°50'00"W
L25	13.98	N89°50'00"W
L26	13.98	N89°50'00"W
L27	13.98	N89°50'00"W
L28	13.98	N89°50'00"W
L29	13.98	N89°50'00"W
L30	13.98	N89°50'00"W
L31	13.98	N89°50'00"W
L32	13.98	N89°50'00"W
L33	13.98	N89°50'00"W
L34	13.98	N89°50'00"W
L35	13.98	N89°50'00"W
L36	13.98	N89°50'00"W
L37	13.98	N89°50'00"W
L38	13.98	N89°50'00"W
L39	13.98	N89°50'00"W
L40	13.98	N89°50'00"W
L41	13.98	N89°50'00"W
L42	13.98	N89°50'00"W
L43	13.98	N89°50'00"W
L44	13.98	N89°50'00"W
L45	13.98	N89°50'00"W
L46	13.98	N89°50'00"W
L47	13.98	N89°50'00"W
L48	13.98	N89°50'00"W
L49	13.98	N89°50'00"W
L50	13.98	N89°50'00"W



GRAPHIC SCALE  
( IN FEET )  
1 inch = 50 ft.

LEGEND  
 [R] 8" x 30" Iron Pin Set in Mason Block  
 (With Yellow Plastic Cap LDC101)  
 Value Construction  
 ● 8" x 30" Iron Pin Set  
 (With Yellow Plastic Cap LDC101)  
 Value Construction  
 Mass = Massand  
 Plan = Proposed  
 C.M. = Closed & Massand  
 D.L. = Closed  
 P.C. = Proposed  
 A.C. = Actual

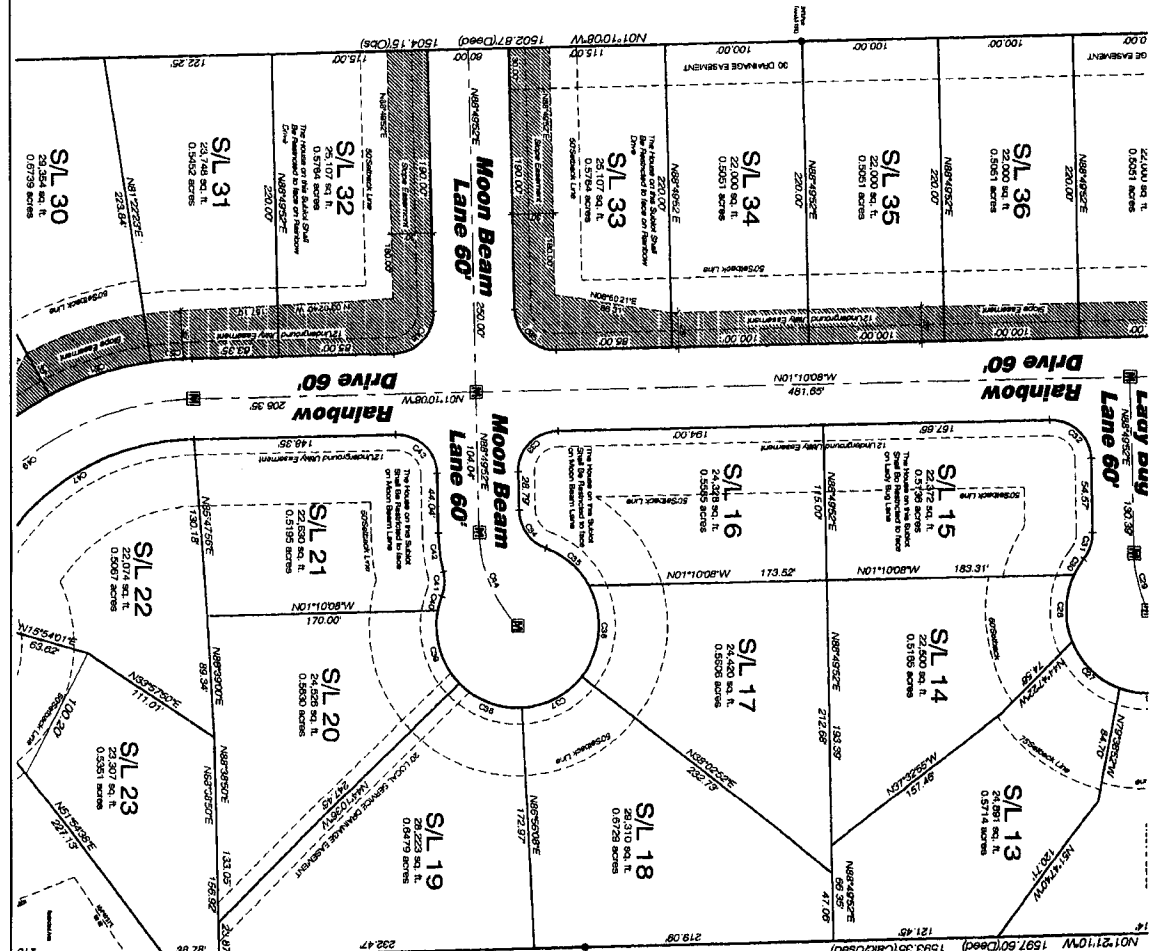


CLONE	LENGTH	BEARING	CLONE AREA	CLONE	CLONE AREA
C1	86.61	280.00	17432.1	68.56	13712.2
C2	68.65	280.00	17432.1	67.78	13712.2
C3	77.39	280.00	17432.1	77.02	13712.2
C4	62.57	280.00	17432.1	62.30	13712.2
C5	31.75	280.00	17432.1	31.58	13712.2
C6	45.85	30.00	6744.8	45.68	6744.8
C7	12.85	30.00	4671.8	12.68	4671.8
C8	12.85	30.00	4671.8	12.68	4671.8
C9	12.85	30.00	4671.8	12.68	4671.8
C10	12.85	30.00	4671.8	12.68	4671.8
C11	12.85	30.00	4671.8	12.68	4671.8
C12	12.85	30.00	4671.8	12.68	4671.8
C13	12.85	30.00	4671.8	12.68	4671.8
C14	12.85	30.00	4671.8	12.68	4671.8
C15	12.85	30.00	4671.8	12.68	4671.8
C16	12.85	30.00	4671.8	12.68	4671.8
C17	12.85	30.00	4671.8	12.68	4671.8
C18	12.85	30.00	4671.8	12.68	4671.8
C19	12.85	30.00	4671.8	12.68	4671.8
C20	12.85	30.00	4671.8	12.68	4671.8
C21	12.85	30.00	4671.8	12.68	4671.8
C22	12.85	30.00	4671.8	12.68	4671.8
C23	12.85	30.00	4671.8	12.68	4671.8
C24	12.85	30.00	4671.8	12.68	4671.8
C25	12.85	30.00	4671.8	12.68	4671.8
C26	12.85	30.00	4671.8	12.68	4671.8
C27	12.85	30.00	4671.8	12.68	4671.8
C28	12.85	30.00	4671.8	12.68	4671.8
C29	12.85	30.00	4671.8	12.68	4671.8
C30	12.85	30.00	4671.8	12.68	4671.8
C31	12.85	30.00	4671.8	12.68	4671.8
C32	12.85	30.00	4671.8	12.68	4671.8
C33	12.85	30.00	4671.8	12.68	4671.8
C34	12.85	30.00	4671.8	12.68	4671.8
C35	12.85	30.00	4671.8	12.68	4671.8
C36	12.85	30.00	4671.8	12.68	4671.8
C37	12.85	30.00	4671.8	12.68	4671.8
C38	12.85	30.00	4671.8	12.68	4671.8
C39	12.85	30.00	4671.8	12.68	4671.8
C40	12.85	30.00	4671.8	12.68	4671.8
C41	12.85	30.00	4671.8	12.68	4671.8
C42	12.85	30.00	4671.8	12.68	4671.8
C43	12.85	30.00	4671.8	12.68	4671.8
C44	12.85	30.00	4671.8	12.68	4671.8
C45	12.85	30.00	4671.8	12.68	4671.8
C46	12.85	30.00	4671.8	12.68	4671.8
C47	12.85	30.00	4671.8	12.68	4671.8
C48	12.85	30.00	4671.8	12.68	4671.8
C49	12.85	30.00	4671.8	12.68	4671.8
C50	12.85	30.00	4671.8	12.68	4671.8

Lady Bird's ornamental plants  
 1000 S. 10th St., Suite 100  
 Tulsa, Oklahoma 74106  
 Phone: 918.438.1111  
 Fax: 918.438.1112  
 Website: www.ladybirdsplants.com

**LEGEND**  
 3/8" x 3/8" Iron Pin Set in Mon. Bark (With Yellow Plastic Cap U.D.C. Inc.)  
 "V" Marker  
 "M" Marker  
 "C" Marker  
 "D" Marker  
 "S" Marker  
 "E" Marker  
 "W" Marker  
 "X" Marker  
 "Y" Marker  
 "Z" Marker  
 "AA" Marker  
 "BB" Marker  
 "CC" Marker  
 "DD" Marker  
 "EE" Marker  
 "FF" Marker  
 "GG" Marker  
 "HH" Marker  
 "II" Marker  
 "JJ" Marker  
 "KK" Marker  
 "LL" Marker  
 "MM" Marker  
 "NN" Marker  
 "OO" Marker  
 "PP" Marker  
 "QQ" Marker  
 "RR" Marker  
 "SS" Marker  
 "TT" Marker  
 "UU" Marker  
 "VV" Marker  
 "WW" Marker  
 "XX" Marker  
 "YY" Marker  
 "ZZ" Marker  
 "AAA" Marker  
 "BBB" Marker  
 "CCC" Marker  
 "DDD" Marker  
 "EEE" Marker  
 "FFF" Marker  
 "GGG" Marker  
 "HHH" Marker  
 "III" Marker  
 "JJJ" Marker  
 "KKK" Marker  
 "LLL" Marker  
 "MMM" Marker  
 "NNN" Marker  
 "OOO" Marker  
 "PPP" Marker  
 "QQQ" Marker  
 "RRR" Marker  
 "SSS" Marker  
 "TTT" Marker  
 "UUU" Marker  
 "VVV" Marker  
 "WWW" Marker  
 "XXX" Marker  
 "YYY" Marker  
 "ZZZ" Marker  
 "AAA" Marker  
 "BBB" Marker  
 "CCC" Marker  
 "DDD" Marker  
 "EEE" Marker  
 "FFF" Marker  
 "GGG" Marker  
 "HHH" Marker  
 "III" Marker  
 "JJJ" Marker  
 "KKK" Marker  
 "LLL" Marker  
 "MMM" Marker  
 "NNN" Marker  
 "OOO" Marker  
 "PPP" Marker  
 "QQQ" Marker  
 "RRR" Marker  
 "SSS" Marker  
 "TTT" Marker  
 "UUU" Marker  
 "VVV" Marker  
 "WWW" Marker  
 "XXX" Marker  
 "YYY" Marker  
 "ZZZ" Marker

Chris N. Jaraman  
 1502 87th Ave S  
 Doc #20090303718  
 P.P.N. 8A-12-07

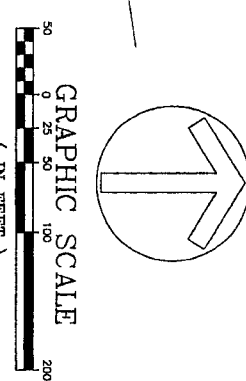


CHORD	LENGTH	BEARING	CHORD	LENGTH	BEARING
C27	60.00	60.00	4744.47	48.57	N44°10'16"
C28	50.00	60.00	4744.50	48.63	N89°05'50"W
C29	43.17	100.00	2426.00	42.78	N70°28'57"E
C30	13.47	60.00	1252.00	13.45	N87°49'14"W
C31	20.84	30.00	3947.17	20.42	N71°01'51"W
C32	20.84	30.00	3947.17	20.42	N71°01'51"W
C33	47.12	30.00	5000.00	42.43	N42°48'26"E
C34	38.83	30.00	6571.49	33.82	N24°21'07"E
C35	42.19	60.00	4714.59	42.26	N40°46'26"E
C36	72.71	60.00	6925.48	68.34	N67°02'24"W
C37	61.20	60.00	4953.16	48.88	N67°02'24"W
C38	61.20	60.00	4953.16	48.88	N67°02'24"W
C39	10.44	60.00	6597.16	10.43	N24°30'51"W
C40	18.19	30.00	3437.20	17.86	N67°31'51"W
C41	28.43	150.00	12911.97	28.37	N67°31'51"W
C42	47.12	30.00	5000.00	42.43	N42°48'26"E
C43	72.71	60.00	6925.48	68.34	N67°02'24"W
C44	72.71	60.00	6925.48	68.34	N67°02'24"W
C45	18.19	30.00	3437.20	17.86	N67°31'51"W
C46	47.12	30.00	5000.00	42.43	N42°48'26"E
C47	160.84	170.00	60595.92	172.43	N67°36'54"W
C48	30.82	30.00	5982.02	29.48	N67°36'54"W
C49	208.24	200.00	75425.07	245.44	N39°10'51"W

Arthur W. & Barbara Wilson  
 1502 87th Ave S  
 P.P.N. 8A-12-07

Robert P. & Deborah Sloan  
 1502 87th Ave S  
 P.P.N. 8A-12-07

Chris N. & Abigail Lunde  
 1502 87th Ave S  
 P.P.N. 8A-12-07

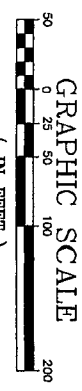
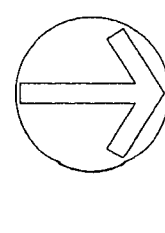


**SUBLOT 7**

LAND DESIGN general barbes  
 Civil Engineers and Surveyors  
 2500 1st Ave S, Suite 200  
 Denver, CO 80202

Vol 49-24 4

CHANCE	LENGTH	BEARING	DATE	BY	REMARKS
C51	78.64	S80.00°E	08/12/02	WJ	REVISION
C52	78.64	S80.00°E	08/12/02	WJ	REVISION
C53	79.56	S80.00°E	08/12/02	WJ	REVISION
C54	86.17	S80.00°E	08/12/02	WJ	REVISION
C55	14.33	S80.00°E	08/12/02	WJ	REVISION
C56	21.01	S80.00°E	08/12/02	WJ	REVISION
C57	50.00	S80.00°E	08/12/02	WJ	REVISION
C58	50.00	S80.00°E	08/12/02	WJ	REVISION
C59	50.00	S80.00°E	08/12/02	WJ	REVISION
C60	50.00	S80.00°E	08/12/02	WJ	REVISION
C61	21.13	S80.00°E	08/12/02	WJ	REVISION



- LEGEND**
- - 
  - 
  - 
  - 
  - 
  - 
  - 
  - 
  - 
  - 
  - 
  - 
  - 
  - 
  - 
  - 
  - 
  - 
  - 
  - 
  - 
  - 
  -

**LAND DESIGN CONSULTANTS**  
Civil Engineers and Surveyors  
15000 West 15th Avenue, Suite 100  
Denver, Colorado 80202  
Tel: 303.755.1100  
Fax: 303.755.1101  
www.landdesign.com

Nature Preserve South Sheet 6 of 6

