

The Nature Preserve North

Phase No. 3

IN APPROVALS

APPROVED THIS 12 DAY OF SEPT. 2006, BY THE LAKE COUNTY BOARD OF COMMISSIONERS

Robert E. Aufderberg ROBERT E. AUFDERBERG
Ramkond E. Swiss RAMKOND E. SWISS

Janice P. Long JANICE P. LONG

APPROVED THIS 18 DAY OF Oct. 2006, BY THE LAKE COUNTY ENGINEER STORM WATER DRAINAGE ENGINEER

James R. Gills JAMES R. GILLS P.E./P.S.

APPROVED THIS 5 DAY OF Sept. 2006 BY THE LAKE COUNTY PROSECUTOR:

Ch. E. Collins CHARLES E. COLLISON

APPROVED THIS 24 DAY OF November 2005 BY THE LAKE COUNTY SANITARY ENGINEER:

Robert J. Saari ROBERT J. SAARI, P.E.
Darrell C. Webster DARRELL C. WEBSTER, DIRECTOR 1/25/04

APPROVED THIS 5 DAY OF Oct. 2006, BY THE CONCORD TOWNSHIP TRUSTEES

Dana L. Lombardo DANA L. LOMBARDO

Carolyn N. Lytha CAROLYN N. LYTHA
B. G. Patterson BOB PATTERSON

UTILITY EASEMENT APPROVALS

UNDERGROUND UTILITY EASEMENT APPROVED AND ACCEPTED THIS 27 DAY OF SEPT. 2006.

Wendy Taylor WENDY TAYLOR
 FRONT NAME

UNDERGROUND UTILITY EASEMENT APPROVED AND ACCEPTED THIS 30 DAY OF Sept. 2006, BY ORWELL NATURAL GAS CO.

Steve Livingston STEVE LIVINGSTON
 FRONT NAME

UNDERGROUND UTILITY EASEMENT APPROVED AND ACCEPTED THIS 28 DAY OF SEPT. 2006, BY ADELPHA CABLE OF LAKE COUNTY.

Janice Beck JANICE BECK
 FRONT NAME

UNDERGROUND UTILITY EASEMENT APPROVED AND ACCEPTED THIS 21 DAY OF SEPT. 2006, BY THE ILLUMINATING COMPANY.

Robert H. DeLuca ROBERT H. DELUCA
 FRONT NAME

UTILITY EASEMENT VACATION:

VACATION OF UNDERGROUND UTILITY EASEMENT MATCHED APPROVED THIS 27 DAY OF SEPT. 2006, BY SBC.

Winston Taylor WINSTON TAYLOR
 FRONT NAME

VACATION OF UNDERGROUND UTILITY EASEMENT MATCHED APPROVED THIS 30 DAY OF Sept. 2006, BY ORWELL NATURAL GAS CO.

Steve Livingston STEVE LIVINGSTON
 FRONT NAME

VACATION OF UNDERGROUND UTILITY EASEMENT MATCHED APPROVED THIS 28 DAY OF SEPT. 2006, BY ADELPHA CABLE OF LAKE COUNTY.

Janice Beck JANICE BECK
 FRONT NAME

VACATION OF UNDERGROUND UTILITY EASEMENT MATCHED APPROVED THIS 21 DAY OF SEPT. 2006, BY THE ILLUMINATING COMPANY.

Robert H. DeLuca ROBERT H. DELUCA
 FRONT NAME

SURVEYORS CERTIFICATION

THIS IS TO CERTIFY THAT AT THE REQUEST OF THE OWNERS, I HAVE SURVEYED AND PLATTED THE NATURE PRESERVE NORTH, PHASE NO. 3, AS SHOWN HEREON AND CONTAINING 7.331 V ACRES OF LAND.

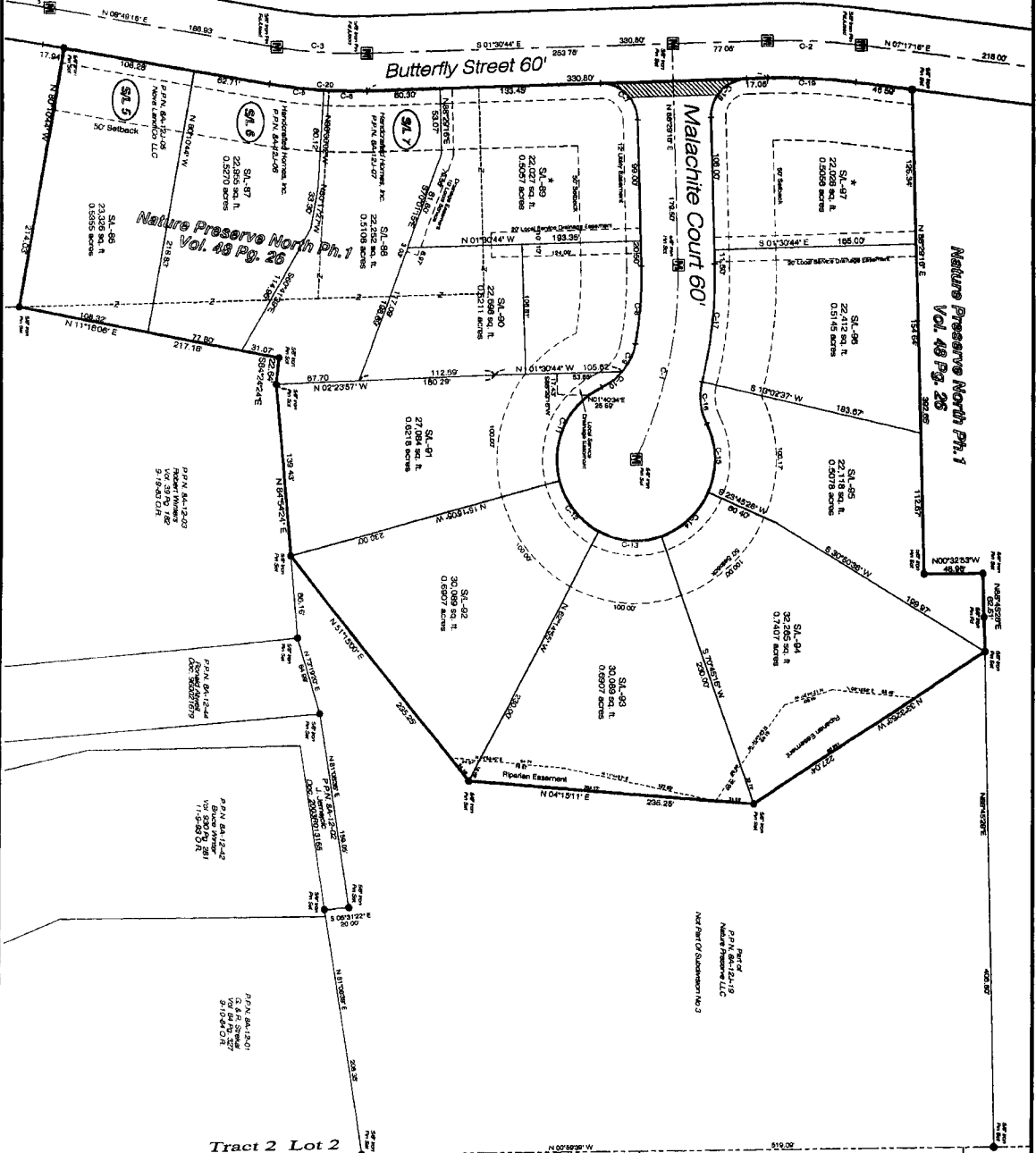
AT ALL POINTS SO INDICATED, MEASUREMENTS WERE EITHER FOUND OR SET, AS NEARER SURVEYING PRACTICES AND STANDARDS AS SHOWN AND CONTAINED HEREON. THE CENTERLINE OF CIRCLED IN SECT. 29 FROM A PREVIOUS LOCAL SURVEY.

THIS IS TO CERTIFY THAT THIS PLAT REPRESENTS A SURVEY IN WHICH THE TRAVELER OF THE EXTENSION BOUNDARIES, WHEN COMPLETED FROM FIELD MEASUREMENTS, WAS ACQUAINTED TO THE BOUNDARIES AND CORRECTLY SHOWN HEREON AND THAT THOSE WHICH ARE NECESSARY FOR THE CONSTRUCTION OF IMPROVEMENTS ARE IN PLACE ON THE SITE WITH ANY CONSTRUCTION.

Richard A. Thompson RICHARD A. THOMPSON, JR., P.S. 77288



Nature Preserve North Phase 1
Vol.48 Pg.26 LCPR



Tract 2 Lot 2
Tract 1 Lot 9

OWNER	LENGTH	BEARING	CHORD	DELTA	BEARING
C-1	168.81	344.95	163.25	272.24	N71°48'31"W
C-2	78.78	900.00	79.72	878.00	S02°53'19"W
C-3	74.04	374.57	73.92	179.00	N09°09'17"E
C-4	58.58	454.31	58.36	557.00	S07°28'27"E
C-5	47.12	30.00	46.43	607.00	S42°28'18"W
C-6	54.12	314.95	64.01	1140.47	N65°54'02"W
C-7	26.06	90.00	26.77	292.95	N82°40'27"W
C-8	21.82	30.00	21.17	242.95	N57°44'09"E
C-9	53.92	66.00	51.82	79.82	N51°22'27"E
C-10	53.82	66.00	51.82	49.96	N04°15'11"E
C-11	53.82	66.00	51.82	49.96	S42°44'39"E
C-12	57.07	66.00	55.26	571.82	N03°29'14"E
C-13	34.96	30.00	34.24	470.25	N03°29'14"E
C-14	47.12	30.00	46.43	607.00	S42°28'18"W
C-15	47.12	30.00	46.43	607.00	S42°28'18"W
C-16	72.19	470.00	72.12	878.00	S42°28'18"W
C-17	72.19	470.00	72.12	878.00	S42°28'18"W
C-18	72.19	470.00	72.12	878.00	S42°28'18"W
C-19	72.19	470.00	72.12	878.00	S42°28'18"W
C-20	72.19	470.00	72.12	878.00	S42°28'18"W

Area of Existing 12' Utility Easement to be vacated.

* Houses on SL 89 & 97 to be built facing Malachie Court

SL-# Ex. Subj. to be Resubdivided

Graphic Scale: 1 inch = 50 feet

North arrow pointing up.

Notes:

- Part of P.P.N. 64-13-01 Nature Preserve No. 1
- Part of P.P.N. 64-13-02 Nature Preserve No. 2
- Part of P.P.N. 64-13-04 Nature Preserve No. 3
- Part of P.P.N. 64-13-05 Nature Preserve No. 4
- Part of P.P.N. 64-13-06 Nature Preserve No. 5
- Part of P.P.N. 64-13-07 Nature Preserve No. 6
- Part of P.P.N. 64-13-08 Nature Preserve No. 7
- Part of P.P.N. 64-13-09 Nature Preserve No. 8
- Part of P.P.N. 64-13-10 Nature Preserve No. 9
- Part of P.P.N. 64-13-11 Nature Preserve No. 10
- Part of P.P.N. 64-13-12 Nature Preserve No. 11
- Part of P.P.N. 64-13-13 Nature Preserve No. 12
- Part of P.P.N. 64-13-14 Nature Preserve No. 13
- Part of P.P.N. 64-13-15 Nature Preserve No. 14
- Part of P.P.N. 64-13-16 Nature Preserve No. 15
- Part of P.P.N. 64-13-17 Nature Preserve No. 16
- Part of P.P.N. 64-13-18 Nature Preserve No. 17
- Part of P.P.N. 64-13-19 Nature Preserve No. 18
- Part of P.P.N. 64-13-20 Nature Preserve No. 19
- Part of P.P.N. 64-13-21 Nature Preserve No. 20
- Part of P.P.N. 64-13-22 Nature Preserve No. 21
- Part of P.P.N. 64-13-23 Nature Preserve No. 22
- Part of P.P.N. 64-13-24 Nature Preserve No. 23
- Part of P.P.N. 64-13-25 Nature Preserve No. 24
- Part of P.P.N. 64-13-26 Nature Preserve No. 25
- Part of P.P.N. 64-13-27 Nature Preserve No. 26
- Part of P.P.N. 64-13-28 Nature Preserve No. 27
- Part of P.P.N. 64-13-29 Nature Preserve No. 28
- Part of P.P.N. 64-13-30 Nature Preserve No. 29
- Part of P.P.N. 64-13-31 Nature Preserve No. 30
- Part of P.P.N. 64-13-32 Nature Preserve No. 31
- Part of P.P.N. 64-13-33 Nature Preserve No. 32
- Part of P.P.N. 64-13-34 Nature Preserve No. 33
- Part of P.P.N. 64-13-35 Nature Preserve No. 34
- Part of P.P.N. 64-13-36 Nature Preserve No. 35
- Part of P.P.N. 64-13-37 Nature Preserve No. 36
- Part of P.P.N. 64-13-38 Nature Preserve No. 37
- Part of P.P.N. 64-13-39 Nature Preserve No. 38
- Part of P.P.N. 64-13-40 Nature Preserve No. 39
- Part of P.P.N. 64-13-41 Nature Preserve No. 40
- Part of P.P.N. 64-13-42 Nature Preserve No. 41
- Part of P.P.N. 64-13-43 Nature Preserve No. 42
- Part of P.P.N. 64-13-44 Nature Preserve No. 43
- Part of P.P.N. 64-13-45 Nature Preserve No. 44
- Part of P.P.N. 64-13-46 Nature Preserve No. 45
- Part of P.P.N. 64-13-47 Nature Preserve No. 46
- Part of P.P.N. 64-13-48 Nature Preserve No. 47
- Part of P.P.N. 64-13-49 Nature Preserve No. 48
- Part of P.P.N. 64-13-50 Nature Preserve No. 49
- Part of P.P.N. 64-13-51 Nature Preserve No. 50
- Part of P.P.N. 64-13-52 Nature Preserve No. 51
- Part of P.P.N. 64-13-53 Nature Preserve No. 52
- Part of P.P.N. 64-13-54 Nature Preserve No. 53
- Part of P.P.N. 64-13-55 Nature Preserve No. 54
- Part of P.P.N. 64-13-56 Nature Preserve No. 55
- Part of P.P.N. 64-13-57 Nature Preserve No. 56
- Part of P.P.N. 64-13-58 Nature Preserve No. 57
- Part of P.P.N. 64-13-59 Nature Preserve No. 58
- Part of P.P.N. 64-13-60 Nature Preserve No. 59
- Part of P.P.N. 64-13-61 Nature Preserve No. 60
- Part of P.P.N. 64-13-62 Nature Preserve No. 61
- Part of P.P.N. 64-13-63 Nature Preserve No. 62
- Part of P.P.N. 64-13-64 Nature Preserve No. 63
- Part of P.P.N. 64-13-65 Nature Preserve No. 64
- Part of P.P.N. 64-13-66 Nature Preserve No. 65
- Part of P.P.N. 64-13-67 Nature Preserve No. 66
- Part of P.P.N. 64-13-68 Nature Preserve No. 67
- Part of P.P.N. 64-13-69 Nature Preserve No. 68
- Part of P.P.N. 64-13-70 Nature Preserve No. 69
- Part of P.P.N. 64-13-71 Nature Preserve No. 70
- Part of P.P.N. 64-13-72 Nature Preserve No. 71
- Part of P.P.N. 64-13-73 Nature Preserve No. 72
- Part of P.P.N. 64-13-74 Nature Preserve No. 73
- Part of P.P.N. 64-13-75 Nature Preserve No. 74
- Part of P.P.N. 64-13-76 Nature Preserve No. 75
- Part of P.P.N. 64-13-77 Nature Preserve No. 76
- Part of P.P.N. 64-13-78 Nature Preserve No. 77
- Part of P.P.N. 64-13-79 Nature Preserve No. 78
- Part of P.P.N. 64-13-80 Nature Preserve No. 79
- Part of P.P.N. 64-13-81 Nature Preserve No. 80
- Part of P.P.N. 64-13-82 Nature Preserve No. 81
- Part of P.P.N. 64-13-83 Nature Preserve No. 82
- Part of P.P.N. 64-13-84 Nature Preserve No. 83
- Part of P.P.N. 64-13-85 Nature Preserve No. 84
- Part of P.P.N. 64-13-86 Nature Preserve No. 85
- Part of P.P.N. 64-13-87 Nature Preserve No. 86
- Part of P.P.N. 64-13-88 Nature Preserve No. 87
- Part of P.P.N. 64-13-89 Nature Preserve No. 88
- Part of P.P.N. 64-13-90 Nature Preserve No. 89
- Part of P.P.N. 64-13-91 Nature Preserve No. 90
- Part of P.P.N. 64-13-92 Nature Preserve No. 91
- Part of P.P.N. 64-13-93 Nature Preserve No. 92
- Part of P.P.N. 64-13-94 Nature Preserve No. 93
- Part of P.P.N. 64-13-95 Nature Preserve No. 94
- Part of P.P.N. 64-13-96 Nature Preserve No. 95
- Part of P.P.N. 64-13-97 Nature Preserve No. 96
- Part of P.P.N. 64-13-98 Nature Preserve No. 97
- Part of P.P.N. 64-13-99 Nature Preserve No. 98
- Part of P.P.N. 64-13-100 Nature Preserve No. 99
- Part of P.P.N. 64-13-101 Nature Preserve No. 100