

# LAKE ERIE SHORES - PHASE 3

BEING A PART OF ORIGINAL PAINESVILLE TOWNSHIP LOT 4 OF TRACT 2  
NOW IN THE TOWNSHIP OF PAINESVILLE, LAKE COUNTY, OHIO

MAY 2004

**gordon**  
Engineering, Inc.  
10 West Erie Street, Suite 201  
Painesville, OH 44077

2004 2051027  
RECORDED FOR RECORD  
11-4-2004  
AT 3:44 AM

**TRANSFERRED**  
November 4, 2004  
Edward H. Zupanel  
Notary, Lake County, Ohio

\* And does hereby grant to the Board of Lake County Commissioners, its agencies and

And does hereby grant to the Board of Lake County Commissioners, its agencies and

And does hereby grant to the Board of Lake County Commissioners, its agencies and

And does hereby grant to the Board of Lake County Commissioners, its agencies and

And does hereby grant to the Board of Lake County Commissioners, its agencies and

And does hereby grant to the Board of Lake County Commissioners, its agencies and

And does hereby grant to the Board of Lake County Commissioners, its agencies and

And does hereby grant to the Board of Lake County Commissioners, its agencies and

And does hereby grant to the Board of Lake County Commissioners, its agencies and

### SURETIONS STATEMENT

This is to certify that the plan represents a survey, in which the corners of the exterior boundaries when constructed from field measurements were observed to which a common section of 110,000 before commencing construction of improvements are in place on the site with any remaining survey monuments to be properly placed upon completion of construction.



Area in Sublots: 15.1524 Acres  
Area in Open Space A: 0.2381 Acres  
Area in Open Space B: 1.1720 Acres  
Area in R/W: 3.3280 Acres  
TOTAL AREA: 23.1511 Acres

### MORTGAGE RELEASE

Part, with FEDERAL SAVING BANK, mortgagee of the land indicated on the cover sheet does hereby join in the above declaration but releases from the operation and lien of the mortgage recorded at Mortgage: Outright Cove (60' feet wide) and the easement therein granted and reserved.

In witness whereof BARB Vlier Federal Savings Bank has caused instrument to be subscribed

in its name by Robert T. Papp, Jr. Vice President thereunto duly authorized and its seal

hereunto affixed at Columbus, Ohio, this 14th day of September, 2004.

SIGNED AND ACKNOWLEDGED IN THE PRESENCE OF:

Tim Simons Name Printed  
Tim Simons Name Printed  
Robert T. Papp, Jr. Name Printed

STATE OF OHIO  
COUNTY OF Lake County  
Therese J. Washburn Notary Public

### APPROVALS

James S. Falvey President  
James S. Falvey President  
James S. Falvey President

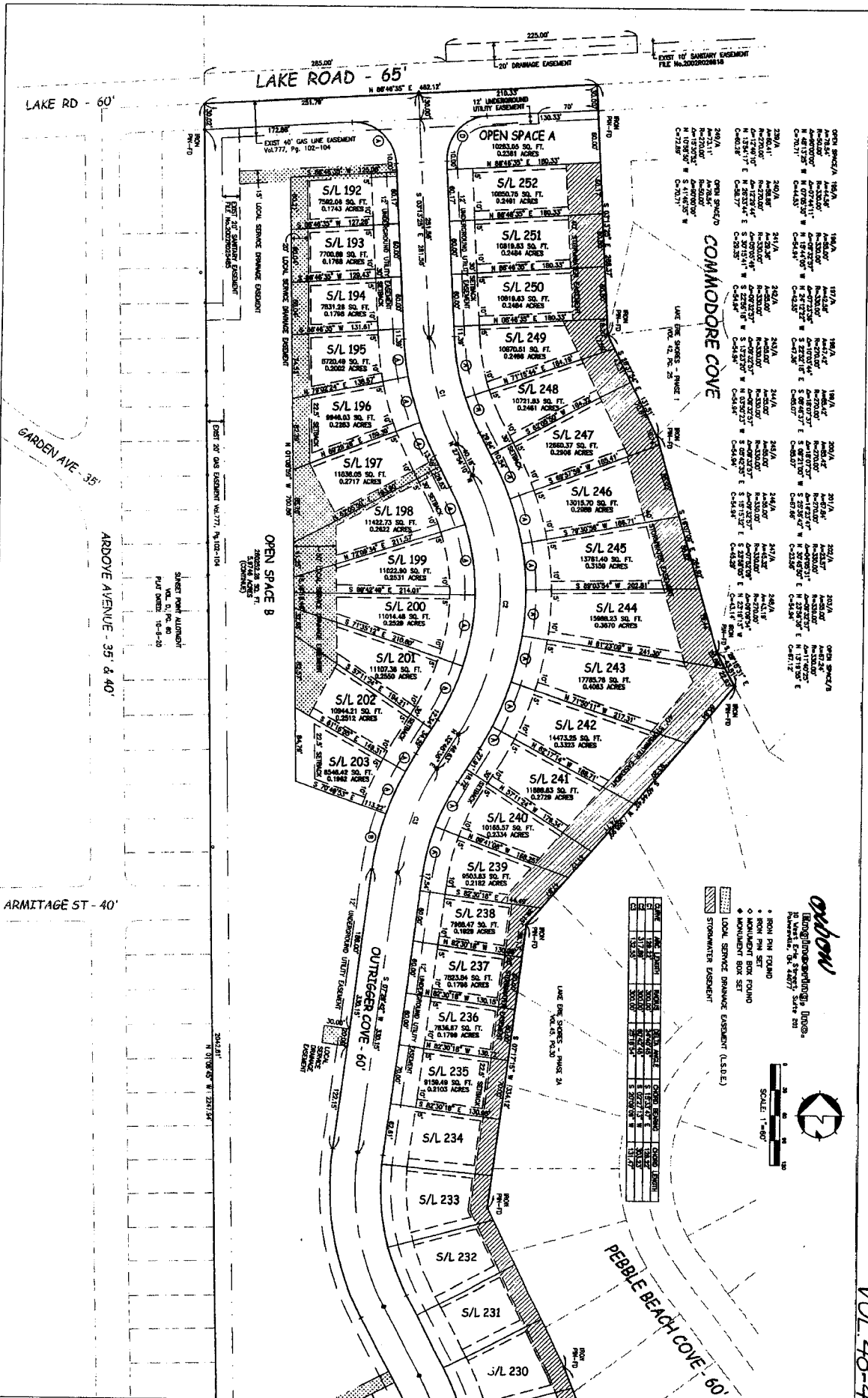
Robert E. Sims Lake County Commissioner  
Daniel P. Troy Lake County Commissioner  
James H. Ball Lake County Engineer

James R. Gills, P.E. Lake County Planning Engineer  
James R. Gills, P.E. Lake County Planning Engineer  
James R. Gills, P.E. Lake County Planning Engineer

Charles E. Douvan Lake County Planning Commission Director / Secretary  
Charles E. Douvan Lake County Planning Commission Director / Secretary  
Charles E. Douvan Lake County Planning Commission Director / Secretary

David A. Bellotti The Planning Commission  
David A. Bellotti The Planning Commission  
David A. Bellotti The Planning Commission

David A. Bellotti The Planning Commission  
David A. Bellotti The Planning Commission  
David A. Bellotti The Planning Commission

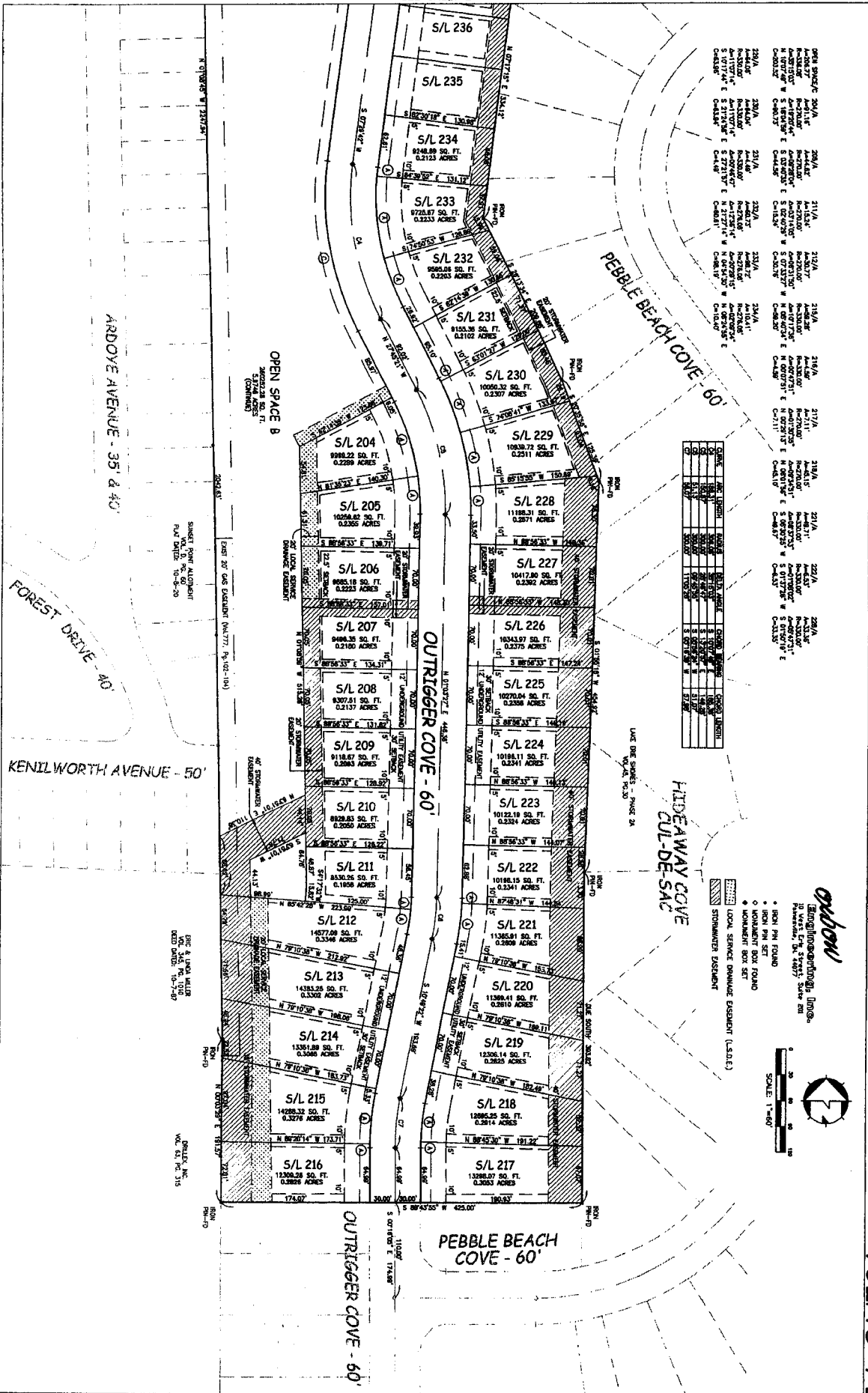


VOL. 48-4-1

SEE SHEET 3

LAKE ERIE SHORES - PHASE 3 - SHEET 2 OF 3

SEE SHEET 2



Lot No.	Area (Sq. Ft.)	Area (Acres)	Dimensions
S/L 236	9248.89	0.2123	130.00' x 71.91'
S/L 235	9248.89	0.2123	130.00' x 71.91'
S/L 234	9248.89	0.2123	130.00' x 71.91'
S/L 233	9248.89	0.2123	130.00' x 71.91'
S/L 232	9248.89	0.2123	130.00' x 71.91'
S/L 231	9248.89	0.2123	130.00' x 71.91'
S/L 230	9248.89	0.2123	130.00' x 71.91'
S/L 229	10834.72	0.2477	150.00' x 72.23'
S/L 228	11188.31	0.2571	150.00' x 74.59'
S/L 227	10412.80	0.2382	150.00' x 69.42'
S/L 226	10433.97	0.2391	150.00' x 69.55'
S/L 225	10220.00	0.2338	150.00' x 68.14'
S/L 224	10181.11	0.2311	150.00' x 67.87'
S/L 223	10122.18	0.2324	150.00' x 67.48'
S/L 222	10188.15	0.2334	150.00' x 67.92'
S/L 221	11328.01	0.2608	150.00' x 75.51'
S/L 220	11386.41	0.2625	150.00' x 75.91'
S/L 219	12326.14	0.2825	150.00' x 82.16'
S/L 218	12888.50	0.2914	150.00' x 85.92'
S/L 217	13388.50	0.3053	150.00' x 89.25'
S/L 216	14288.32	0.3276	150.00' x 95.14'
S/L 215	14361.89	0.3288	150.00' x 95.74'
S/L 214	14383.28	0.3292	150.00' x 95.89'
S/L 213	14383.28	0.3292	150.00' x 95.89'
S/L 212	14877.08	0.3396	150.00' x 99.19'
S/L 211	16353.50	0.3734	150.00' x 109.00'
S/L 210	16285.50	0.3710	150.00' x 108.57'
S/L 209	16175.51	0.3683	150.00' x 107.83'
S/L 208	16175.51	0.3683	150.00' x 107.83'
S/L 207	16175.51	0.3683	150.00' x 107.83'
S/L 206	16175.51	0.3683	150.00' x 107.83'
S/L 205	16175.51	0.3683	150.00' x 107.83'
S/L 204	16175.51	0.3683	150.00' x 107.83'