

# SUGAR MAPLE HILLS

## PHASE TWO

OHIO EPA ISOLATED WETLANDS  
NATIONWIDE PERMIT #0502271

### DEDICATION

BEFORE ME, the undersigned authority, on this day personally appeared \_\_\_\_\_, known to me to be the person whose name is subscribed to the foregoing instrument, acknowledged to me that he executed the same for the purposes and consideration therein expressed, and he acknowledged to me that he executed the same voluntarily. I certify that this instrument contains the true and correct intent of the parties thereto, and that it conforms to the laws of the State of Ohio, and that there is nothing to be done hereon.

WITNESSETH my hand and seal of said office, this \_\_\_\_\_ day of \_\_\_\_\_, 2006.

Notary Public for the State of Ohio

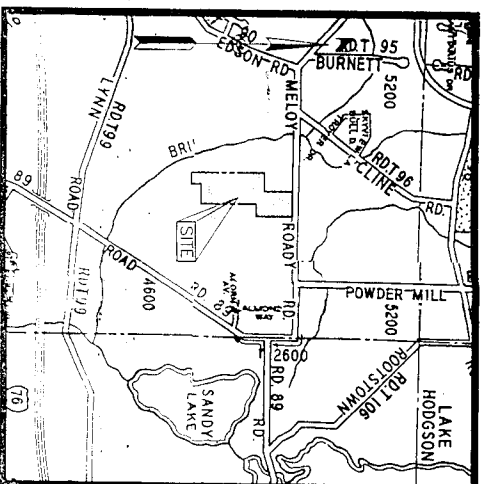
REPLAT OF SUGAR MAPLE HILLS PHASE 1  
BLOCK "A" PLAT NO. 2005-126  
SITUATED IN THE TOWNSHIP OF BRIMFIELD  
COUNTY OF PORTAGE STATE OF OHIO  
AND KNOWN AS BEING PART OF LOT 11  
OF SAID TOWNSHIP.

LOTS	9.9184 AC.
STREETS	1.5321 AC.
BLOCK "A-R"	13.2007 AC.
OPEN SPACE "F", "G", & "H"	9.7724 AC.
TOTAL	34.4236 AC.

A MINIMUM OF 132007 ACRES OF BLOCK "A-R" WILL BE MAINTAINED AS OPEN SPACE AND FUTURE PHASES.

PREPARED BY  
**GBC Design, Inc.**  
222 W. Lakeside Street  
Akron, Ohio 44302  
Phone: 330.442.2222  
FAX: 330.442.2222  
AUGUST, 2006

FORWARDED BY  
WOUND DEVELOPMENT, INC.  
453 S. HIGH STREET, SUITE 303  
AKRON, OHIO 44311  
23 LOTS



SUGAR MAPLE HILLS PHASE TWO  
SHEET 1 OF 4

### APPROVALS

APPROVED BY THE PORTAGE COUNTY ENGINEER THIS 17<sup>th</sup> day of October 2006  
*Michael D. Mearns*  
PORTAGE COUNTY ENGINEER

APPROVED BY PORTAGE COUNTY WATER RESOURCES THIS 19<sup>th</sup> day of October 2006  
*Michael D. Mearns*  
PORTAGE COUNTY WATER RESOURCES

APPROVED BY THE PORTAGE COUNTY REGIONAL PLANNING COMMISSION THIS 17<sup>th</sup> day of October 2006  
*Michael D. Mearns*  
PORTAGE COUNTY REGIONAL PLANNING COMMISSION

APPROVED IN ACCORDANCE WITH SECTION 163.02 OF THE OHIO CONSTITUTION THIS 17<sup>th</sup> day of October 2006  
*Michael D. Mearns*  
PORTAGE COUNTY ENGINEER

### RECORDING

APPROVED BY THE BRIMFIELD TOWNSHIP COMMISSION THIS 16<sup>th</sup> day of October 2006  
*Michael D. Mearns*  
TOWNSHIP ENGINEER

RECEIVED AT THE PORTAGE COUNTY TAX MAP OFFICE THIS 17<sup>th</sup> day of October 2006  
ASSISTANT PORTAGE COUNTY TAX MAP SURVEYOR 04:01:00 - 04:50:00

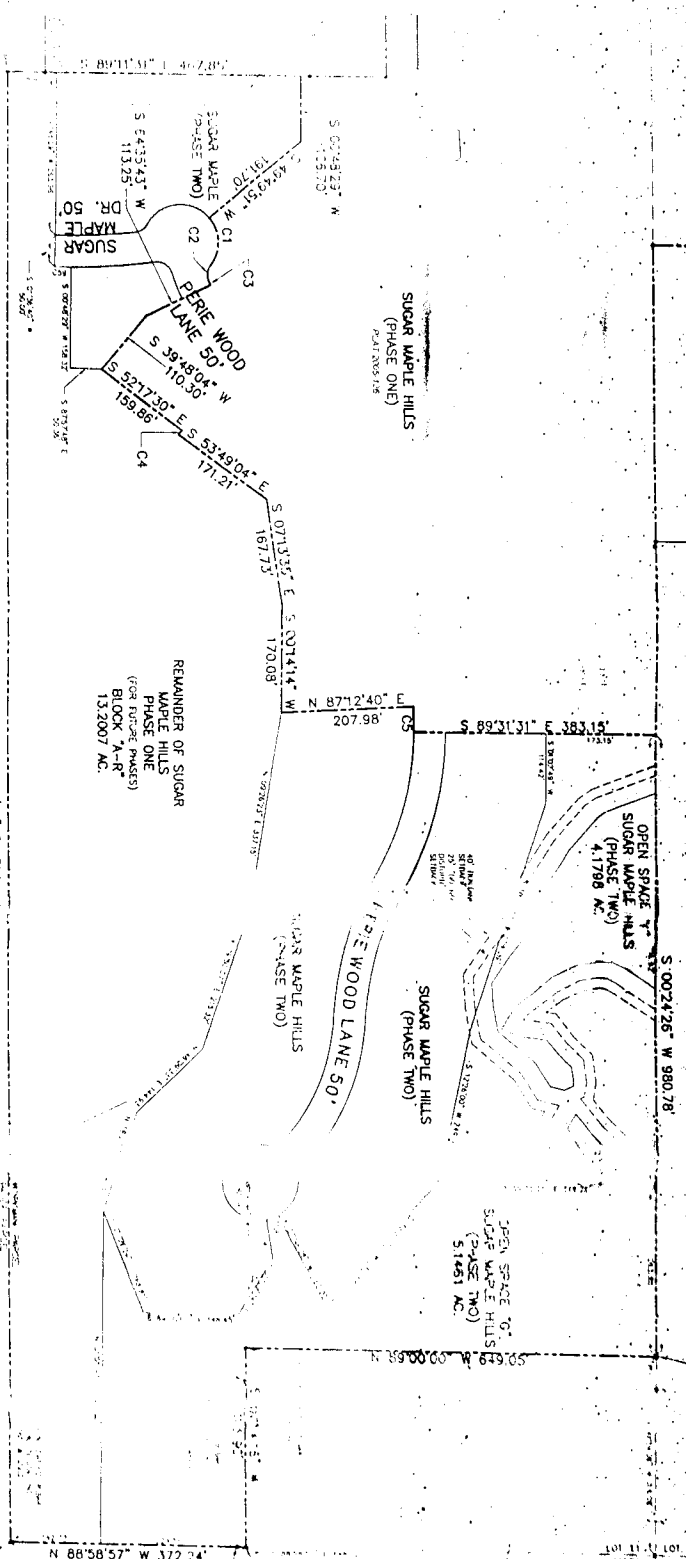
ENTERED FOR TRANSFER THIS 23<sup>rd</sup> day of October 2006  
PORTAGE COUNTY AUDITOR 2:03:50

RECEIVED FOR RECORDING THIS 23<sup>rd</sup> day of October 2006  
RECORDED THIS 23<sup>rd</sup> day of October 2006  
*Donna Mearns*  
PORTAGE COUNTY RECORDER

COMBINATION PLAT  
PLAT 158 OF 160

PLAT 158 OF 160

PLAT 158 OF 160



1/2 ACRES  
APN 040114000104  
NSR #20060154

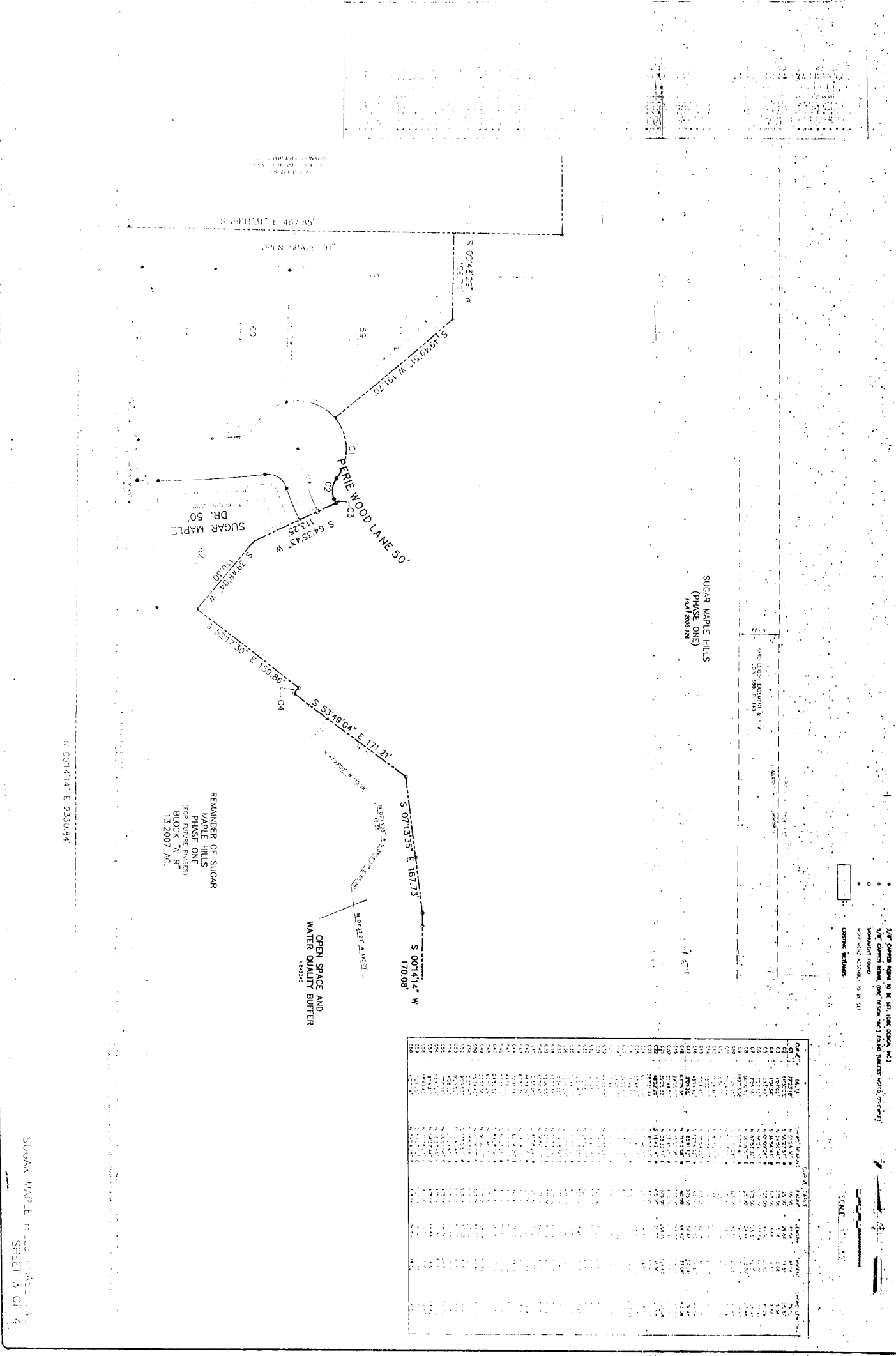
N 00°14'14" E 2330.84'

LEGEND

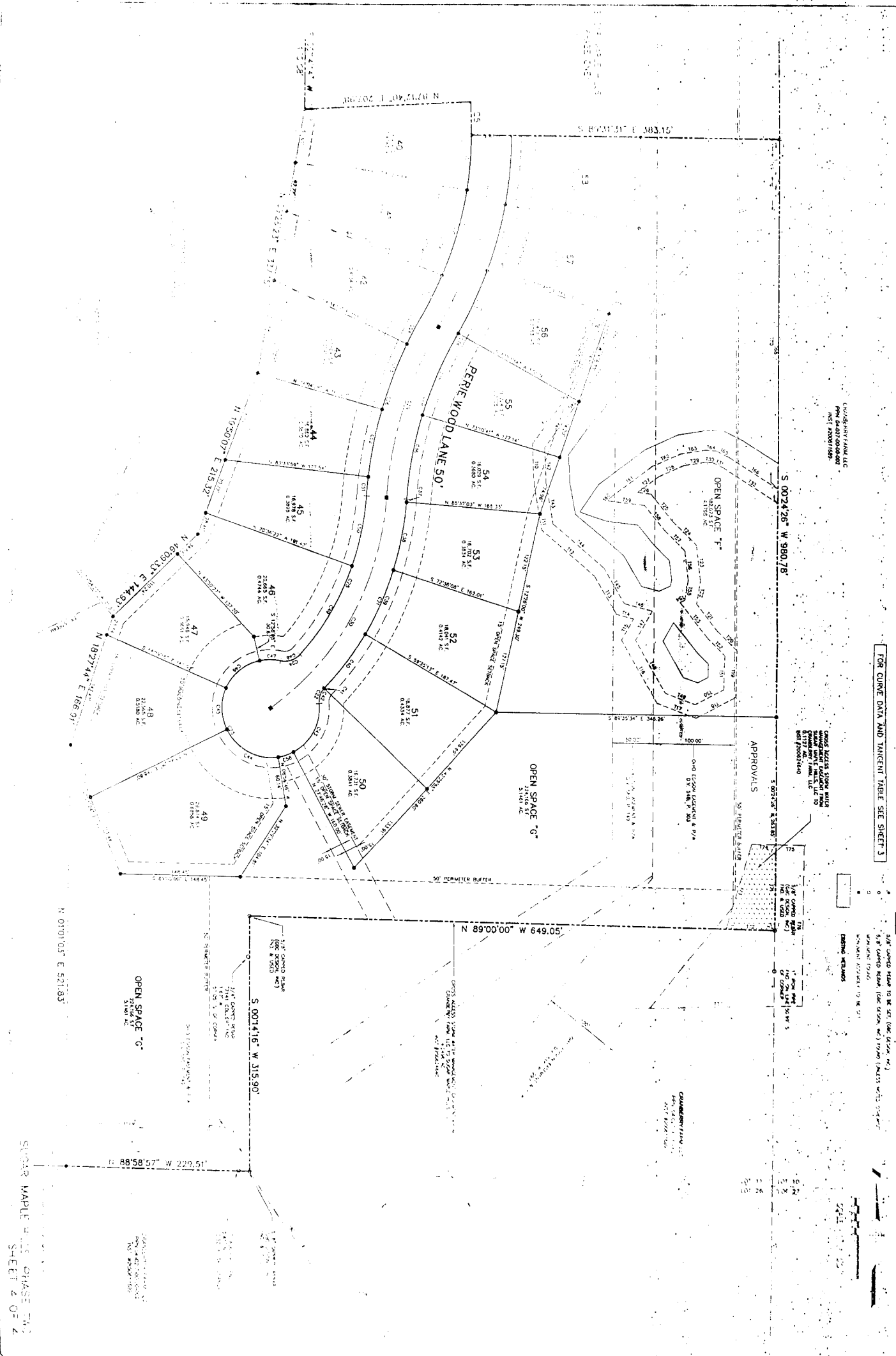
- 1/4" Contour Lines to be set (see Table)
- 1/4" Contour Lines (see Table)
- Boundary Lines
- Contour Intervals

SCALE 1" = 100'

Contour Interval	Contour Elevation	Contour Description	Contour Interval	Contour Elevation	Contour Description
1.0	100.0	100.0	1.0	100.0	100.0
1.0	101.0	101.0	1.0	101.0	101.0
1.0	102.0	102.0	1.0	102.0	102.0
1.0	103.0	103.0	1.0	103.0	103.0
1.0	104.0	104.0	1.0	104.0	104.0
1.0	105.0	105.0	1.0	105.0	105.0
1.0	106.0	106.0	1.0	106.0	106.0
1.0	107.0	107.0	1.0	107.0	107.0
1.0	108.0	108.0	1.0	108.0	108.0
1.0	109.0	109.0	1.0	109.0	109.0
1.0	110.0	110.0	1.0	110.0	110.0
1.0	111.0	111.0	1.0	111.0	111.0
1.0	112.0	112.0	1.0	112.0	112.0
1.0	113.0	113.0	1.0	113.0	113.0
1.0	114.0	114.0	1.0	114.0	114.0
1.0	115.0	115.0	1.0	115.0	115.0
1.0	116.0	116.0	1.0	116.0	116.0
1.0	117.0	117.0	1.0	117.0	117.0
1.0	118.0	118.0	1.0	118.0	118.0
1.0	119.0	119.0	1.0	119.0	119.0
1.0	120.0	120.0	1.0	120.0	120.0
1.0	121.0	121.0	1.0	121.0	121.0
1.0	122.0	122.0	1.0	122.0	122.0
1.0	123.0	123.0	1.0	123.0	123.0
1.0	124.0	124.0	1.0	124.0	124.0
1.0	125.0	125.0	1.0	125.0	125.0
1.0	126.0	126.0	1.0	126.0	126.0
1.0	127.0	127.0	1.0	127.0	127.0
1.0	128.0	128.0	1.0	128.0	128.0
1.0	129.0	129.0	1.0	129.0	129.0
1.0	130.0	130.0	1.0	130.0	130.0
1.0	131.0	131.0	1.0	131.0	131.0
1.0	132.0	132.0	1.0	132.0	132.0
1.0	133.0	133.0	1.0	133.0	133.0
1.0	134.0	134.0	1.0	134.0	134.0
1.0	135.0	135.0	1.0	135.0	135.0
1.0	136.0	136.0	1.0	136.0	136.0
1.0	137.0	137.0	1.0	137.0	137.0
1.0	138.0	138.0	1.0	138.0	138.0
1.0	139.0	139.0	1.0	139.0	139.0
1.0	140.0	140.0	1.0	140.0	140.0
1.0	141.0	141.0	1.0	141.0	141.0
1.0	142.0	142.0	1.0	142.0	142.0
1.0	143.0	143.0	1.0	143.0	143.0
1.0	144.0	144.0	1.0	144.0	144.0
1.0	145.0	145.0	1.0	145.0	145.0
1.0	146.0	146.0	1.0	146.0	146.0
1.0	147.0	147.0	1.0	147.0	147.0
1.0	148.0	148.0	1.0	148.0	148.0
1.0	149.0	149.0	1.0	149.0	149.0
1.0	150.0	150.0	1.0	150.0	150.0
1.0	151.0	151.0	1.0	151.0	151.0
1.0	152.0	152.0	1.0	152.0	152.0
1.0	153.0	153.0	1.0	153.0	153.0
1.0	154.0	154.0	1.0	154.0	154.0
1.0	155.0	155.0	1.0	155.0	155.0
1.0	156.0	156.0	1.0	156.0	156.0
1.0	157.0	157.0	1.0	157.0	157.0
1.0	158.0	158.0	1.0	158.0	158.0
1.0	159.0	159.0	1.0	159.0	159.0
1.0	160.0	160.0	1.0	160.0	160.0
1.0	161.0	161.0	1.0	161.0	161.0
1.0	162.0	162.0	1.0	162.0	162.0
1.0	163.0	163.0	1.0	163.0	163.0
1.0	164.0	164.0	1.0	164.0	164.0
1.0	165.0	165.0	1.0	165.0	165.0
1.0	166.0	166.0	1.0	166.0	166.0
1.0	167.0	167.0	1.0	167.0	167.0
1.0	168.0	168.0	1.0	168.0	168.0
1.0	169.0	169.0	1.0	169.0	169.0
1.0	170.0	170.0	1.0	170.0	170.0
1.0	171.0	171.0	1.0	171.0	171.0
1.0	172.0	172.0	1.0	172.0	172.0
1.0	173.0	173.0	1.0	173.0	173.0
1.0	174.0	174.0	1.0	174.0	174.0
1.0	175.0	175.0	1.0	175.0	175.0
1.0	176.0	176.0	1.0	176.0	176.0
1.0	177.0	177.0	1.0	177.0	177.0
1.0	178.0	178.0	1.0	178.0	178.0
1.0	179.0	179.0	1.0	179.0	179.0
1.0	180.0	180.0	1.0	180.0	180.0
1.0	181.0	181.0	1.0	181.0	181.0
1.0	182.0	182.0	1.0	182.0	182.0
1.0	183.0	183.0	1.0	183.0	183.0
1.0	184.0	184.0	1.0	184.0	184.0
1.0	185.0	185.0	1.0	185.0	185.0
1.0	186.0	186.0	1.0	186.0	186.0
1.0	187.0	187.0	1.0	187.0	187.0
1.0	188.0	188.0	1.0	188.0	188.0
1.0	189.0	189.0	1.0	189.0	189.0
1.0	190.0	190.0	1.0	190.0	190.0
1.0	191.0	191.0	1.0	191.0	191.0
1.0	192.0	192.0	1.0	192.0	192.0
1.0	193.0	193.0	1.0	193.0	193.0
1.0	194.0	194.0	1.0	194.0	194.0
1.0	195.0	195.0	1.0	195.0	195.0
1.0	196.0	196.0	1.0	196.0	196.0
1.0	197.0	197.0	1.0	197.0	197.0
1.0	198.0	198.0	1.0	198.0	198.0
1.0	199.0	199.0	1.0	199.0	199.0
1.0	200.0	200.0	1.0	200.0	200.0



SUGAR MAPLE HILLS PHASE ONE  
SHEET 3 OF 4



CONSTRUCTION DATE: 08/20/2008  
 DRAWN BY: J. H. [unreadable]  
 CHECKED BY: [unreadable]

FOR CURVE DATA AND TANGENT TABLE SEE SHEET 3

CONSTRUCTION DATE: 08/20/2008  
 DRAWN BY: J. H. [unreadable]  
 CHECKED BY: [unreadable]

APPROVALS

CONSTRUCTION DATE: 08/20/2008  
 DRAWN BY: J. H. [unreadable]  
 CHECKED BY: [unreadable]

SUGAR MAPLE PHASE TWO  
 SHEET 2 OF 2