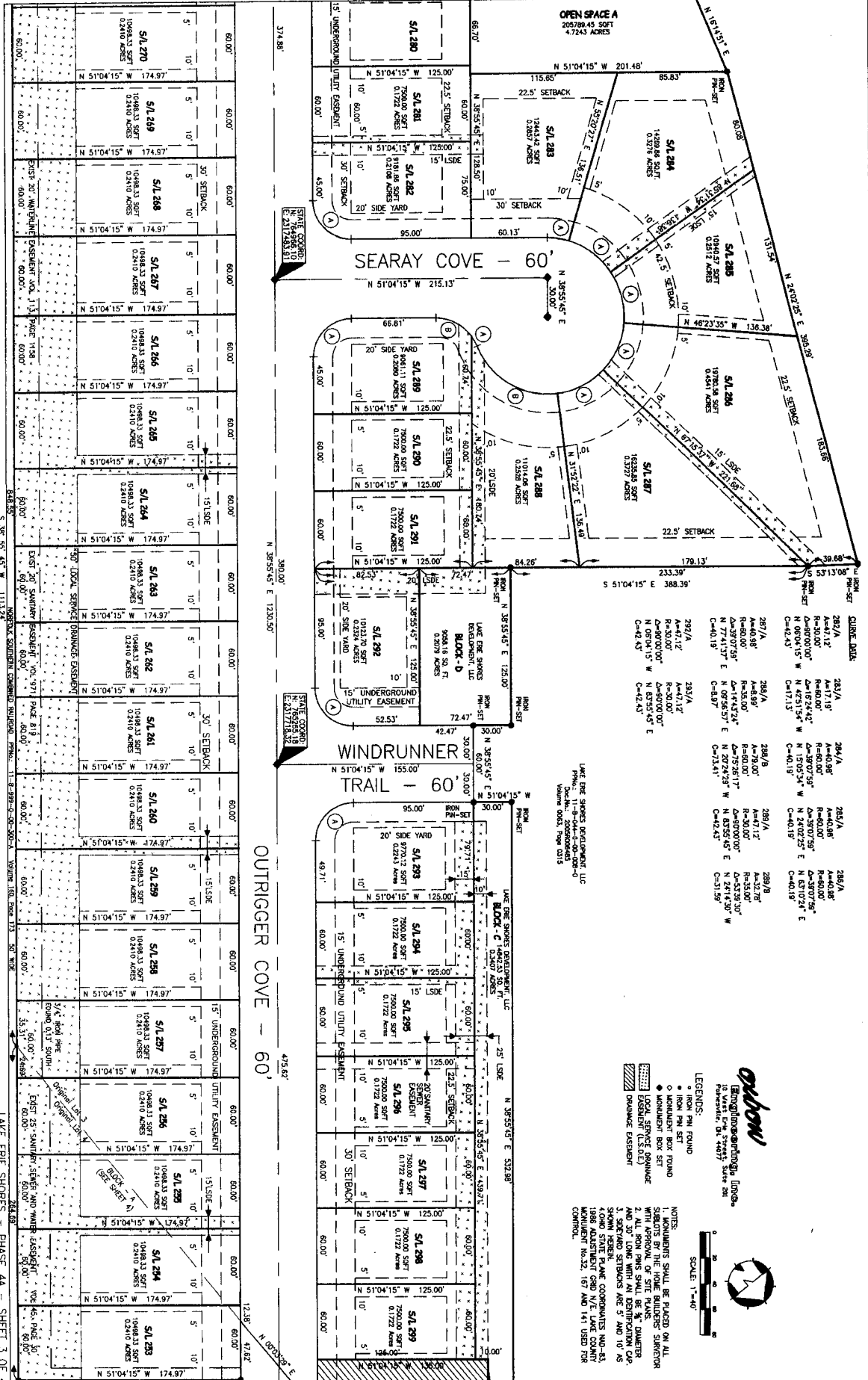






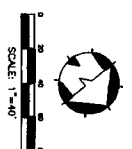
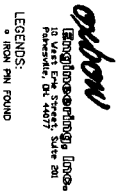
SEE SHEET 4



101.50-33-2

CURVE DATA

280/1	A=47.12	R=30.00	Δ=90°00'00"	C=42.43
281/1	A=47.19	R=40.00	Δ=90°00'00"	C=47.13
282/1	A=47.26	R=50.00	Δ=90°00'00"	C=51.83
283/1	A=47.33	R=60.00	Δ=90°00'00"	C=56.53
284/1	A=47.40	R=70.00	Δ=90°00'00"	C=61.23
285/1	A=47.47	R=80.00	Δ=90°00'00"	C=65.93
286/1	A=47.54	R=90.00	Δ=90°00'00"	C=70.63
287/1	A=47.61	R=100.00	Δ=90°00'00"	C=75.33
288/1	A=47.68	R=110.00	Δ=90°00'00"	C=80.03
289/1	A=47.75	R=120.00	Δ=90°00'00"	C=84.73
290/1	A=47.82	R=130.00	Δ=90°00'00"	C=89.43
291/1	A=47.89	R=140.00	Δ=90°00'00"	C=94.13
292/1	A=47.96	R=150.00	Δ=90°00'00"	C=98.83
293/1	A=48.03	R=160.00	Δ=90°00'00"	C=103.53
294/1	A=48.10	R=170.00	Δ=90°00'00"	C=108.23
295/1	A=48.17	R=180.00	Δ=90°00'00"	C=112.93
296/1	A=48.24	R=190.00	Δ=90°00'00"	C=117.63
297/1	A=48.31	R=200.00	Δ=90°00'00"	C=122.33
298/1	A=48.38	R=210.00	Δ=90°00'00"	C=127.03
299/1	A=48.45	R=220.00	Δ=90°00'00"	C=131.73



LEGENDS:

- IRON PIN FOUND
- NON-IRON BOX FOUND
- ▨ LOCAL SERVICE DRAINAGE
- ▨ DRAINAGE EASEMENT
- ▨ DRAINAGE EASEMENT (15.0:1)
- ▨ DRAINAGE EASEMENT

- NOTES:
1. MONUMENTS SHALL BE PLACED ON ALL CORNERS OF LOTS AND AT THE INTERSECTION OF SITE LINES.
  2. ALL IRON PINS SHALL BE 3/8" DIAMETER AND 30" LONG WITH AN IDENTIFICATION CAP.
  3. SETBACKS AND SETBACKS ARE 5' AND 10' AS SHOWN.
  4. CONTOUR STATE PLANE COORDINATES AND 83-1988 ADJUSTMENT GSD N/E LAKE COUNTY COUNTY.
  5. 1988 ADJUSTMENT 18-32, 18-19 AND 14-1 USED FOR CORRECTIONS.

SEE SHEET 2

LAKE ERIE SHORES - PHASE 44 - SHEET 3 OF 4



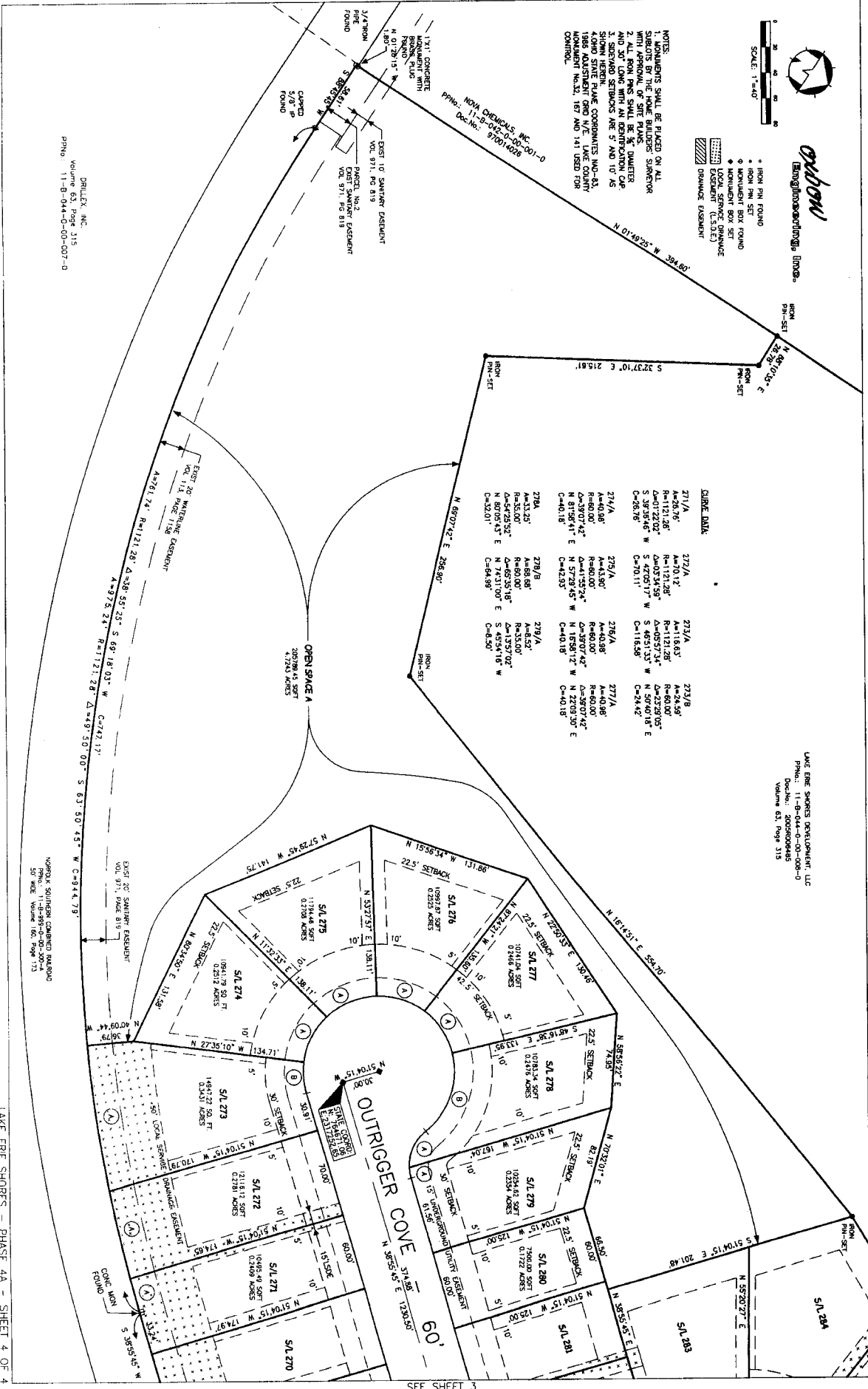
SCALE: 1"=40'

**Orlando**  
Engineering & Planning, Inc.

- IRON PIN FOUND
- IRON PIN SET
- MONUMENT BOX FOUND
- MONUMENT BOX SET
- LOCAL SERVICE DRAINAGE
- LOCAL SERVICE DRAINAGE
- DRAINAGE EASEMENT

NOTES:  
 1. MONUMENTS SHALL BE PLACED ON ALL SUBLOTS BY THE HOME BUILDER SURVEYOR WITH APPROVAL OF THE COUNTY ENGINEER AND 30' LOCUS WITH AN IDENTIFICATION CAP.  
 2. 1.5' SIDEWALK SETBACKS ARE 5' AND 10' AS SHOWN HEREIN.  
 3. SIDEWALKS SHALL BE CONFORMING TO 1988 ADJUSTMENT ORD. N/E. LAKE COUNTY MONUMENT NO. 22, 167 AND 141 USED FOR CONTROL.

NOVA CHEVROLET, INC.  
 P.P.M. No. 11-B-00-000-001-0  
 Doc. No. 9701000



**CURVE DATA**

271/A	272/A	273/A	273/B
A=42.98'	A=42.98'	A=42.98'	A=42.98'
R=60.00'	R=60.00'	R=60.00'	R=60.00'
Δ=01°22'02"	Δ=00°57'34"	Δ=05°57'34"	Δ=23°29'05"
S 39°38'46" W	S 47°05'17" W	S 48°51'33" W	N 59°40'18" E
C=26.78'	C=70.11'	C=116.98'	C=24.42'
274/A	275/A	276/A	277/A
A=40.98'	A=43.90'	A=40.98'	A=40.98'
R=60.00'	R=60.00'	R=60.00'	R=60.00'
Δ=54°25'52"	Δ=13°37'02"	Δ=65°35'18"	Δ=13°37'02"
N 80°05'45" E	N 74°31'00" E	N 74°31'00" E	S 45°54'18" W
C=32.01'	C=94.89'	C=94.89'	C=40.18'
278/A	278/B	279/A	
A=33.30'	A=68.68'	A=68.68'	
R=35.00'	R=60.00'	R=35.00'	
Δ=54°25'52"	Δ=65°35'18"	Δ=13°37'02"	
N 80°05'45" E	N 74°31'00" E	N 74°31'00" E	
C=32.01'	C=94.89'	C=40.18'	

LAKE ERIE SHORES DEVELOPMENT, LLC  
 P.P.M. No. 11-B-00-000-000-0  
 Doc. No. 2005000485  
 Volume 63, Page 315

DRILLEX, INC.  
 Volume 63, Page 115  
 P.P.M. No. 11-B-00-000-007-0

NOVAK SOLUTIONS CONSULTING PARTNERS  
 P.P.M. No. 11-B-00-000-000-0  
 Doc. No. 2005000485  
 Volume 63, Page 173

LAKE ERIE SHORES - PHASE 4A - SHEET 4 OF 4

SEE SHEET 3

101.50-33-3